

Архангельск (8182)63-90-72
Астана (7172)727-132
Астрахань (8512)99-46-04
Барнаул (3852)73-04-60
Белгород (4722)40-23-64
Брянск (4832)59-03-52
Владивосток (423)249-28-31
Волгоград (844)278-03-48
Вологда (8172)26-41-59
Воронеж (473)204-51-73
Екатеринбург (343)384-55-89
Иваново (4932)77-34-06

Ижевск (3412)26-03-58
Иркутск (395)279-98-46
Казань (843)206-01-48
Калининград (4012)72-03-81
Калуга (4842)92-23-67
Кемерово (3842)65-04-62
Киров (8332)68-02-04
Краснодар (861)203-40-90
Красноярск (391)204-63-61
Курск (4712)77-13-04
Липецк (4742)52-20-81

Магнитогорск (3519)55-03-13
Москва (495)268-04-70
Мурманск (8152)59-64-93
Набережные Челны (8552)20-53-41
Нижний Новгород (831)429-08-12
Новокузнецк (3843)20-46-81
Новосибирск (383)227-86-73
Омск (3812)21-46-40
Орел (4862)44-53-42
Оренбург (3532)37-68-04
Пенза (8412)22-31-16

Пермь (342)205-81-47
Ростов-на-Дону (863)308-18-15
Рязань (4912)46-61-64
Самара (846)206-03-16
Санкт-Петербург (812)309-46-40
Саратов (845)249-38-78
Севастополь (8692)22-31-93
Симферополь (3652)67-13-56
Смоленск (4812)29-41-54
Сочи (862)225-72-31
Ставрополь (8652)20-65-13

Сургут (3462)77-98-35
Тверь (4822)63-31-35
Томск (3822)98-41-53
Тула (4872)74-02-29
Тюмень (3452)66-21-18
Ульяновск (8422)24-23-59
Уфа (347)229-48-12
Хабаровск (4212)92-98-04
Челябинск (351)202-03-61
Череповец (8202)49-02-64
Ярославль (4852)69-52-93

Киргизия (996)312-96-26-47

Россия (495)268-04-70

Казахстан (772)734-952-31

<https://greetmed.nt-rt.ru> || gdc@nt-rt.ru

КАТАЛОГ НА БОЛЬНИЧНОЕ ОБОРУДОВАНИЕ



We, Ningbo Greetmed Medical Instruments Co., Ltd., located in the second biggest sea port city--Ningbo, China. We are one of the professional & biggest suppliers for medical devices and equipments, We have established very closely relationships with hundreds of excellent Chinese enterprises for long term. We are supplying high-quality products and best service to big hospitals and purchasers in the whole world. Meanwhile, we also introduce the overseas high technical products to meet our increasingly domestic markets.

Our leading products are stretcher, Hospital bed, Type-B ultrasonic machine, fitness equipment, infant incubator, shadow-less lamp ,patient monitor, etc. All our products have approved by CE and ISO.

We engage the professional engineer as the technical adviser of our company, for providing innovative, production and quality control, also, we have many sale- staffs, they master technology and production, service for our clients from hundreds of countries and areas.

We see are "Top-quality products, Most competitive price, Very excellent service" as our tenet. for all old and new clients .

Contents

P01-10

Outdoor

- 1、 Foldaway Stretcher
- 2、 Stretcher for Ambulance Car
- 3、 Scoop Stretcher
- 4、 Stair Stretcher
- 5、 Emergency Bed
- 6、 Vacuum Mattress Stretcher
- 7、 Basket Stretcher
- 8、 Carry Sheet
- 9、 Spine Board
- 10、 Body Splint
- 11、 Head Immobilize
- 12、 Splint
- 13、 Cervical Collar

P37-70

ICU

- 1、 Hospital Bed
- 2、 Baby Bed
- 3、 Bedside Cabinet
- 4、 Infant Incubator
- 5、 Infant Radiant Warmer
- 6、 Neonate Bilirubin Phototherapy Equipment
- 7、 Monitor
- 8、 ECG
- 9、 Oxygen Generator
- 10、 Fetal Doppler
- 11、 Ultraviolet Sterilizing Lamp Car
- 12、 Bedsore Prevention Cure Mattress
- 13、 Oxygen Bag
- 14、 Oxygen Cylinder

P79-84

Others

- 1、 Adult Heart Model
- 2、 Human Skeleton Model
- 3、 CPR Training Manikin
- 4、 Brain with Arteries Model
- 5、 Skull Model
- 6、 Basic Nursing Manikin
- 7、 Dual-Sex Torso-27 parts
- 8、 Basic Nursing Manikin
- 9、 Median Section of Male Pelvis Model
- 10、 Median Section of Female Pelvis Model
- 11、 Eyes Model-6parts

P11-36

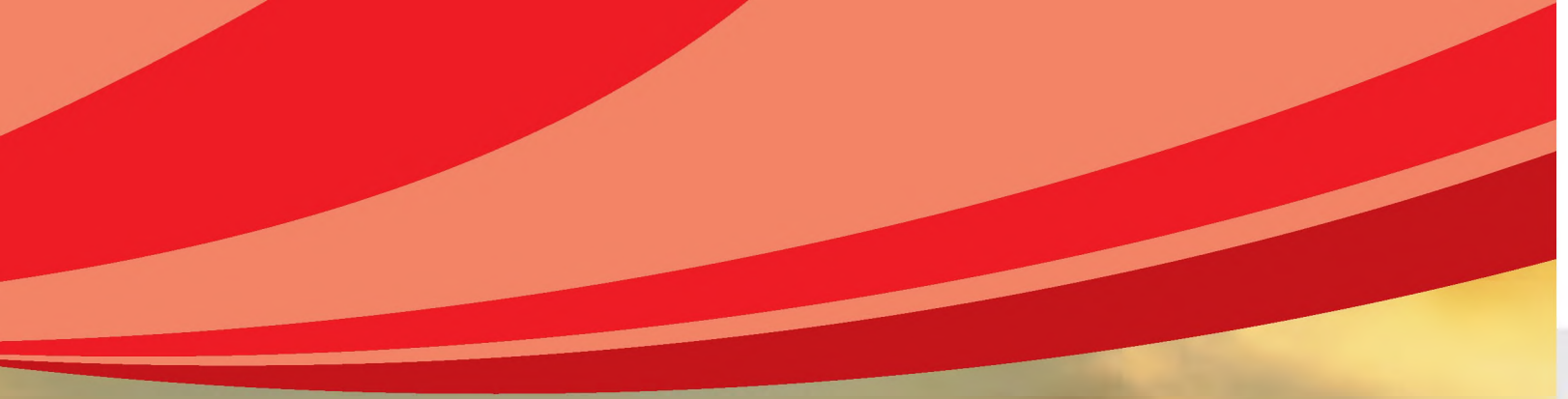
Operation Room

- 1、 Electrical Operation Table
- 2、 Electrical Obstetric Bed
- 3、 Multi-Functional Operation Table
- 4、 Orthopedics Tractor Rack
- 5、 Chair-mounted Dental Unit
- 6、 X-RAY Machine
- 7、 Showless Operation Lamp
- 8、 Ultrasound Scanner
- 9、 Suction Machine
- 10、 Stomach Cleaning Machine

P71-78

The Basic

- 1、 Infusion Stand
- 2、 Trolley
- 3、 History Trolley
- 4、 Movable Table
- 5、 Transfusion Chair
- 6、 Waiting Chair
- 7、 Inspect Bed
- 8、 Nurse Chair



Outdoor

Foldaway Stretcher



>> GT510-002

Foldaway Stretcher

Unfolded Size(LxWxH): 186x51x17cm;
Folded Size(LxWxH): 92x51x10cm;
Self Weight: 6kgs;
Load Bearing: 160kgs;
Packing: 2pcs/97x55x20cm;
G.W.: 13kgs.



>> GT510-003

Foldaway Stretcher

Unfolded Size(LxWxH): 186x51x25cm;
Folded Size(LxWxH): 92x51x13cm;
Self Weight: 7kgs;
Load Bearing: 160kgs;
Packing: 2pcs/97x55x20cm;
G.W.: 17kgs.



>> GT510-018

Foldaway Stretcher

Unfolded Size(LxWxH): 186x51x8cm;
Folded Size(LxWxH): 92x51x10cm;
Self Weight: 4kgs;
Load Bearing: 160kgs;
Packing: 2pcs/97x55x20cm;
G.W.: 6kgs.



>> GT510-004

Foldaway Stretcher

Unfolded Size(LxWxH): 185x51x21cm;
Folded Size(LxWxH): 50x51x16cm;
Self Weight: 7kgs;
Load Bearing: 160kgs;
Packing: 1pc/56x54x20cm;
G.W.: 9kgs

Foldaway Stretcher



» GT510-048

Foldaway Stretcher

Unfolded Size(LxWxH): 216x55x14cm;
Folded Size(LxWxH): 56x22x20cm;
Self Weight: 8kgs;
Load Bearing: 160kgs;
Packing: 1pc/62x24x28cm;
G.W.: 7kgs.

» GT510-049

Foldaway Stretcher

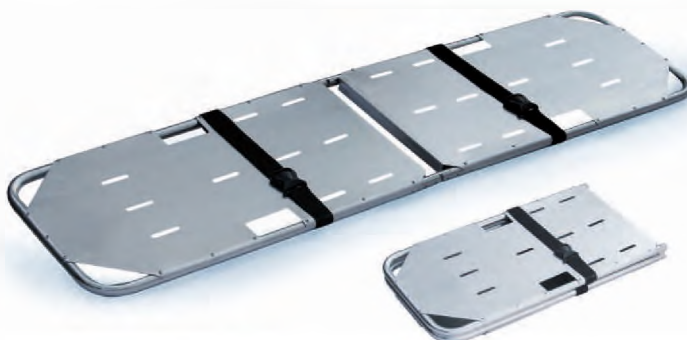
Unfolded Size(LxWxH): 190x53x22cm;
Folded Size(LxWxH): 103x53x22cm;
Self Weight: 15kgs;
Load Bearing: 160kgs;
Packing: 1pc/105x56x19cm;
G.W.: 17kgs.



» GT510-038

Foldaway Stretcher

Unfolded Size(LxWxH): 190x54x15cm;
Folded Size(LxWxH): 95x20x9cm;
Self Weight: 8kgs;
Load Bearing: 160kgs;
Packing: 1pc/191x17x12cm;
G.W.: 9kgs.



» GT510-005

Foldaway Stretcher

Unfolded Size(LxWxH): 187x50x4cm;
Folded Size(LxWxH): 93x50x11cm;
Self Weight: 8kgs;
Load Bearing: 160kgs;
Packing: 2pcs/98x56x19cm;
G.W.: 17kgs.

Stretcher for Ambulance Car



>> GT510-022

Stretcher For Ambulance Car

High Position(LxWxH): 195x56x92cm;
Low Position(LxWxH): 195x56x29cm;
Maximum Angle of the Back: 50°;
Self Weight: 35kgs;
Load Bearing: 181kgs;
Packing: 1pc/206x62x31cm;
G.W.: 49kgs.

>> GT510-012

Stretcher For Ambulance Car (standard)

High Position(LxWxH):
196x55x88cm;
Low Position(LxWxH):
196x55x26cm;
Maximum Angle of the Back: 53°;
Self Weight: 33kgs;
Load Bearing: 181kgs;
Packing: 1pc/202x62x27cm;
G.W.: 48kgs.



>> GT510-029

Stretcher For Ambulance Car

High Position(LxWxH):
194x54x93cm;
Low Position(LxWxH):
194x54x34cm;
Maximum Angle of the Back: 70°;
Max Angle of the Knee Part: 20°;
Self Weight: 42kgs;
Load Bearing: 181kgs;
Packing: 1pc/202x62x41cm;
G.W.: 46kgs.



Scoop Stretcher / Stair Stretcher



>> GT510-006

Scoop Stretcher

Unfolded Size(LxWxH): 211x42x7cm;
 Folded Size(LxWxH): 121x42x10cm;
 Self Weight: 9kgs;
 Load Bearing: 160kgs;
 Packing: 1pc/170x7x43cm;
 G.W.: 11kgs.

>> GT510-030

Scoop Stretcher

Unfolded Size(LxWxH):
 186x43x7cm;
 Self Weight: 8.5kgs;
 Load Bearing: 250kgs;
 Packing: 1pc/189x49x7cm;
 G.W.: 10kgs.



>> GT510-011

Stair Stretcher

Unfolded Size(LxWxH):
 71x53x94cm;
 Folded Size(LxWxH):
 94x53x23cm;
 Self Weight: 10kgs;
 Load Bearing: 159kgs;
 Packing: 1pc/95x57x23cm;
 G.W.: 12kgs.



>> GT510-031

Stair Stretcher

Unfolded Size(LxWxH):
 72x54x100cm;
 Folded Size(LxWxH):
 100x54x28cm;
 Self Weight: 20kgs;
 Load Bearing: 227kgs;
 Packing: 1pc/103x28x57cm;
 G.W.: 22kgs.



Emergency Bed



>> GT510-016

Emergency Bed

High Position(LxWxH): 191x55x89cm;
 Range from Bed Surface to
 Ground:61cms;
 Size of the Castors: \varnothing 150mms;
 Self Weight: 35kgs;
 Load Bearing: 160kgs;
 Packing: 1pc/195x63x36cm;
 G.W.: 42kgs.



>> GT510-032 Emergency Bed

High Position(LxWxH): 191x55x89cm;
 Range from Bed Surface to Ground: 61cms;
 Size of the Castors: \varnothing 150mms;
 Max Angle of the Back: 70°;
 Self Weight: 37kgs; Load Bearing: 160kgs;
 Packing: 1pc/197x63x52cm; G.W.: 47kgs.



>> GT510-017 Emergency Bed

High Position(LxWxH): 191x59x88cm;
 Low Position(LxWxH): 191x59x57cm;
 Size of the Castors: \varnothing 150mms;
 Max Angle of the back: 65°;
 Self Weight: 81kgs; Load Bearing: 250kgs;
 Packing:1pc/198x71x68cm; G.W.: 100kgs.



>> GT510-033 Emergency Bed

High Position(LxWxH):190x61x82cm;
 Low Position(LxWxH): 190x61x59cm;
 Size of the Castors: \varnothing 150mms;
 Max Angle of the Back: 45°;
 Load Bearing: 227kgs;
 Packing:1pc/198x71x68cm;
 G.W.: 100kgs.



Vacuum Mattress Stretcher / Basket Stretcher / Carry Sheet



» GT510-025

Vacuum Mattress Stretcher

Unfolded Size(LxWxH):197x97x7cm;
Self Weight: 6kgs;
Packing: 1pc/96x60x29cm;
G.W.:12kgs.



» GT510-010

Basket Stretcher

Unfolded Size(LxWxH): 218x64x18cm;
Folded Size(LxWxH): 123x64x22cm;
Self Weight: 18kgs;
Load Bearing: 270kgs;
Packing: 1pc/130x68x31cm;
G.W.: 25kgs.



» GT510-034

Carry Sheet

Unfolded Size(LxW): 210x75cm;
Folded Size(LxW): 55x26cm;
Self Weight: 3kgs;
Load Bearing: 100kgs;
Packing: 5pcs/65x30x21cm;
G.W.: 14kgs.

GT510-008B

GT510-009B



GT510-008A

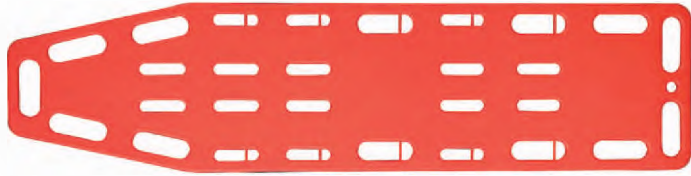
Spine Board

>> GT510-008A/008B/009B Spine Board

GT510-008A Unfolded Size(LxWxH): 184x45x6cm;
Self Weight: 8kgs; Load Bearing: 160kgs;
Packing: 1pc/187x48x7cm; G.W.: 10.5kgs.

GT510-008B Unfolded Size(LxWxH): 187x41x6cm;
Self Weight: 6.5kgs; Load Bearing: 160kgs;
Packing: 1pc/187x48x7cm; G.W.: 9kgs.

GT510-009B Unfolded Size(LxWxH): 136x35x5cm;
Self Weight: 4.5kgs; Load Bearing: 80kgs;
Packing: 1pc/142x39x8cm; G.W.: 7kgs.



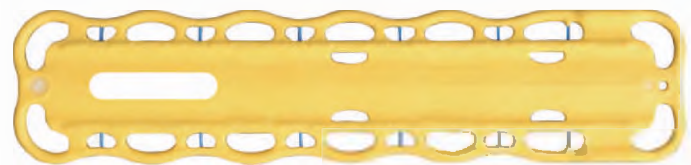
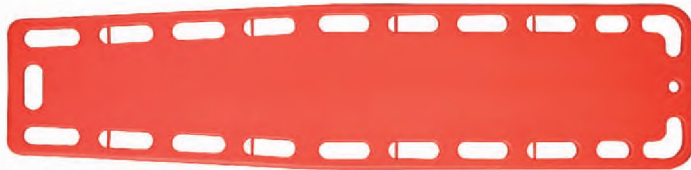
>> GT510-007B1 Spine Board

Unfolded Size(LxWxH): 185x46x5cm;
Self Weight: 7kgs;
Load Bearing: 160kgs;
Packing: 1pc/187x48x7cm;
G.W.: 11kgs.



>> GT510-007B2 Spine Board

Unfolded Size(LxWxH): 183x45x6cm;
Self Weight: 7kgs;
Load Bearing: 160kgs;
Packing: 1pc/187x48x7cm;
G.W.: 10kgs.



>> GT510-040 Spine Board

Unfolded Size(LxWxH): 184x41x6cm;
Self Weight: 6kgs;
Load Bearing: 205kgs;
Packing: 1pc/188x43x8cm;
G.W.: 8kgs.

Body Splint / Head Immobilize



>> GT510-026L

Body Splint

Unfolded Size(LxW): 82x71cm;
Self Weight: 3kgs;
Packing: 2pcs/86x28x19cm;
G.W.: 8kgs.



>> GT510-026C

Body Splint

Unfolded Size(LxW): 59x64cm;
Self weight: 2kgs;
Packing: 2pcs/62x20x20cm;
G.W.: 4kgs.



>> GT510-027L

Head Immobilize

Unfolded Size(LxWxH):
40x26x16cm;
Self Weight: 1kg;
Packing: 8pcs/54x45x63cm;
G.W.: 11kgs.



>> GT510-027C

Head Immobilize

Unfolded Size(LxWxH):
26x34x14cm;
Self Weight: 0.5kg;
Packing: 10pcs/58x38x56cm;
G.W.: 8kgs.

Splint / Cervical Collar



» GT510-045

Splint

Self Weight: 3kgs;
Packing: 2pcs/75x34x20cm;
G.W.: 6kgs.

» GT510-046

Splint

Self Weight: 1.5kgs;
Packing: 1pcs/92x36x16cm;
G.W.: 2kgs.



» GT510-047

Splint

Self Weight: 1kgs;
Packing: 8pcs/52x28x25cm;
G.W.: 10kgs.



» GT510-028A

Cervical Collar

Unfolded Size(LxWxH):
56x19x0.5cm;
Self Weight: 0.2kg;
Packing: 40pcs/59x43x27cm;
G.W.: 7kgs.



» GT510-028B

Cervical Collar

Unfolded Size(LxWxH):
54x13x0.5cm;
Self Weight: 0.1kg;
Packing: 40pcs/61x45x39cm;
G.W.: 6kgs.

Operation Room



Electrical Operation Table

» GT602-213 Electrical Operation Table



Features:

- The bed surface adopts imported carbon plastic plate, the table can be moved vertically which can fulfill the needs of C type arm whole body examination.
- Every actions of the motor are controlled according to electric motor working principle and by remote controller.
- Both sides of the bed rail for the high quality 304 stainless steel.
- The mattress is wrapped with imported artificial leather.
- High-density memory sponge is formed in one piece, with no seam.
- Imported brand motor without noise and with long life-span.
- The base seat and upright column covering are made of high quality 304 stainless steel which can be easily cleaned and sterilized.
- Foot treadle brake device which is easy for moving operation table.

Technical Specification:

Table length: 2000±50mm
Table width: 500±20mm
Maximum and minimum height of the platform: (700~900)±50mm
Horizontal and longitudinal movement: ≥400mm
Back board fold upward: ≥40°
Forward: ≥20°
Backward: ≥20°
Leftward and Rightward: ≥15°
Head board fold upward: ≥40°
Head board fold downward: ≥90°
Leg board fold downward: ≥90°
Leg of board split: ≥180°
Waist board lifting: ≥100mm
Output power: ≤300VA
Main Voltage: AC220V 50Hz

Accessories:

A pair of shoulder support frame;
A pair of waist support frame;
A pair of arm resting frame;
A pair of leg support frame;
A screen frame;
A pair of pedal foot board;
A waistband.

Electrical Operation Table

» GT602-215

Electrical Operation Table



Features:

- The bed surface adopts imported carbon plastic plate, which can fulfill the requirements of X-ray examination, photography.
- Every actions of the motor are controlled according to electric motor working principle and by remote controller.
- Both sides of the bed rail for the high quality 304 stainless steel.
- The mattress is wrapped with imported artificial leather.
- High-density memory sponge is formed in one piece, with no seam.
- Imported brand motor without noise and with long life-span.
- The base seat and upright column covering are made of high quality 304 stainless steel which can be easily cleaned and sterilized.
- Foot treadle brake device which is easy for moving operation table.

Technical Specification:

Table length: 2000±50mm

Table width: 500±20mm

Maximum and minimum height of the platform: (750~1000)±50mm

Back board fold upward: ≥50°

Back board fold downward: ≥20°

Forward: ≥20°

Backward: ≥30°

Leftward and Rightward: ≥15°

Head board fold upward: ≥40°

Head board fold downward: ≥90°

Leg board fold downward: ≥90°

Leg of board split: ≥180°

Waist board lifting: ≥100mm

Main Voltage: AC220V 50Hz

Input Power: 300VA

Accessories:

- A pair of shoulder support frame;
- A pair of waist support frame;
- A pair of arm resting frame;
- A pair of leg support frame;
- A screen frame;
- A pair of pedal foot board;
- A waistband.

» GT602-216

Electrical Operation Table

Features:

- The bed surface adopts imported carbon plastic plate, the table can be moved vertically which can fulfill the needs of C type arm whole body examination.
- Various actions are controlled according to electric hydraulic working principle and by remote controller.
- Imported motor and solenoid valve.
- Electric braking device, convenient for shifting the operating table.



Technical Specification:

Length: 2000±50mm

Width: 500±20mm

Maximum and minimum height of the platform: ≥300mm

Back board fold upward: ≥60°

Back board fold downward: ≥20°

Forward: ≥20°

Backward: ≥30°

Leftward and Rightward: ≥15°

Head board fold upward: ≥40°

Head board fold downward: ≥90°

Leg board fold downward: ≥90°

Leg of board split: ≥180°

Waist board lifting: ≥100mm

Main Voltage: AC220V±10% 50Hz

Input Power: 400VA

Accessories:

- A pair of shoulder support frame;
- A pair of waist support frame;
- A pair of arm resting frame;
- A pair of leg support frame;
- A screen frame;
- A pair of pedal foot board;
- A waistband.

Electrical Obstetric Bed



» GT602-207

Multi-functional (Electric) Obstetric Table

Features:

- Imported brand motor various action are controlled by remote controller.
- The table, base seat and upright column covering are made of high quality 304 stainless steel which is anti-corrosive and can be easily cleaned.
- The mattress adopts high density memory sponge and is once formed, with no seam.
- Whole stainless steel hidden auxiliary table with flexible extension and retraction.
- Equipped with stainless steel sewage basin and other accessories.
- Foot treadle brake device which is easy for moving obstetric table.

Technical Specification:

Table length: 1900±50mm
Table width: 600±10mm
Maximum and minimum height of the platform: (700mm~950mm)±100mm
Length and width of auxiliary table
Length: 520mm
Width: 500mm
Back board fold upward: 60°
Forward: ≥10°
Backward: ≥12°
Main Voltage: AC220V 50Hz
Power: 150AV

Accessories:

A pair of arm resting frame;
A pair of leg support frame;
A pair of armrest;
A stainless steel sewage basin;
A hand-holding remote controller.

Electrical Obstetric Bed

» GT602-208 Gynecological Table



This type gynecological table is suitable for conducting gynecological surgery, operative abortion and gynecological examination, etc by medical unit.

Features:

- Unique profile design which is beautiful and elegant.
- Foot step hydraulic elevating and Various actions are controlled by pneumatic.
- Imported Y type sealing ring with good sealing performance and is durable.
- Whole stainless steel hidden auxiliary table with flexible extension and retraction.
- Foot treadle brake device which is easy for moving operating table.

Technical Specification:

Table length: 1330±50mm
Table width: 550±30mm
Auxiliary table: 340mm x 460mm (±20mm)
Back board fold upward: 75°
Forward inclining of the platform: ≥17°
Backward inclining of the platform: ≥17°
Back board fold upward: ≥70°
Table at the lowest level: ≤650mm
Table elevating stroke: ≥250mm
Auxiliary table stroke: ≥500mm

Accessories:

A pair of leg support frame;
A stainless steel sewage basin;
A pair of armrest.

>> GT602-209

Multi-functional (Electric) Obstetric Table



Features:

- Imported brand motor various action are controlled by remote controller.
- The table, base seat and upright column covering are made of high quality 304 stainless steel which is anti-corrosive and can be easily cleaned.
- The mattress adopts high density memory sponge and is once formed, with no seam.
- Whole stainless steel hidden auxiliary table with flexible extension and retraction.
- Equipped with stainless steel sewage basin and other accessories.
- Foot treadle brake device which is easy for moving obstetric table.

Technical Specification:

Table length:1900±50mm
Table width: 600±20mm
Maximum and minimum height of the platform : (600mm-950mm)±150mm
Back board fold upward: 75°
Forward: ≥17°
Backward: ≥17°
Main Voltage: AC220V 50Hz
Power: 150AV
Horizontal lifting of the table: 400mm
Table load: 150kg

Accessories:

A pair of arm resting frame;
A pair of leg support frame;
A pair of armrest;
A stand for transfusion;
A stainless steel sewage basin;
A handle holding remote controller;
Pedal controller(optional).

Multi-Functional Operation Table



» **GT602-301**
Multi-Functional Operation Table

GT602-301 series operation table features with integrated multi-function is suitable for various operations conducted by medical unit.

» **GT602-301A**
Multi-Functional Operation Table



» **GT602-301B**
Multi-Functional Operation Table



» **GT602-301C**
Multi-Functional Operation Table



» **GT602-301D**
Multi-Functional Operation Table





» GT602-301E

Multi-Functional Operation Table

Features:

- 301A type base seat and upright column covering are made of high quality 304 stainless steel, which is anti-corrosive and can be easily cleaned.
- 301B, table, base seat and upright column covering are made of high quality 304 stainless steel.
- 301D type base seat and upright column covering are made of high quality 304 stainless steel with double beds, which is anti-corrosive and can be easily cleaned.
- 301E type base seat and upright column covering are made of 304 stainless steel with double beds, split leg type.
- Imported Y type sealing ring with good sealing performance and is durable.
- Rotary brake device which is easy for moving operating table.
- All actions are controlled on both sides.

Note:

301, the table and base are made of high quality cold board which is treated by static spray.
 301A, the base seat and upright column covering are made of high quality 304 stainless steel.
 301B, the table, base seat and upright column covering are made of high quality 304 stainless steel.
 301C, the base is made of cold board which is treated by static spray, split leg type and dischargeable.
 301D, the base seat and upright column covering are made of high quality 304 stainless steel with double beds.
 301E, the base seat and upright column covering are made of high quality 304 stainless steel with double beds, split leg type and dischargeable.

Technical Specification:

Length: 2100±50mm
 Width: 480±20mm
 Maximum and minimum height of the platform: (750mm~950mm)±50mm
 Back board fold upward: ≥75°
 Back board fold downward: ≥18°
 Forward: ≥20°
 Backward: ≥15°
 Leftward and rightward: ≥18°
 Head board fold upward: ≥45°
 Head board fold downward: ≥90°
 Leg board fold downward: ≥90°
 Leg of the board split (301, 301E): ≥180°
 Waist board lifting: ≥120mm

Accessories:

A pair of shoulder support frame;
 A pair of waist support frame;
 A pair of arm resting frame;
 A pair of leg support frame;
 A screen frame;
 A pair of pedal foot board.

Multi-Functional Operation Table



» **GT602-308**
Multi-Functional Operation Table

GT602-308 series operation table features with integrated multi-function is suitable for various operations conducted by medical unit.

» **GT602-308A**
Multi-Functional Operation Table



» **GT602-308B**
Multi-Functional Operation Table



» **GT602-308C**
Multi-Functional Operation Table





» GT602-308D

Multi-Functional Operation Table

Features:

- 308A, 308B type base seat and upright column covering are made of high quality 304 stainless steel, which is anti-corrosive and can be easily cleaned.
- 308C, table, base seat and upright column covering are made of high quality 304 stainless steel with double beds, split leg type.
- 308D table, base seat and upright column covering are made of high quality 304 stainless steel.
- Imported Y type sealing ring, double security without oil-leakage.
- Rotary brake device which is easy for moving operating table.
- All actions are controlled on head position.

Note:

308, the table and base are made of cold board which is treated by static spray.
 308A, the base seat and upright column covering are made of high quality 304 stainless steel.
 308B, the base seat and upright column covering are made of high quality 304 stainless steel, split leg type.
 308C, base seat and upright column covering are made of high quality 304 stainless steel with double beds, split leg type.
 308D, table base seat and upright column covering are made of high quality 304 stainless steel.

Technical Specification:

Length: 2050±50mm
 Width: 480±20mm
 Maximum and minimum height of the platform: (750mm~950mm)±50mm
 Back board fold upward: ≥80°
 Back board fold downward: ≥10°
 Forward: ≥25°
 Backward: ≥25°
 Leftward and rightward: ≥20°
 Head board fold upward: ≥45°
 Head board fold downward: ≥90°
 Leg board fold downward: ≥90°
 Leg of the board split(308B): ≥180°
 Leg of the board split(308C): ≥180°, dischargeable
 Waist board lifting: ≥120mm

Accessories:

A pair of shoulder support frame;
 A pair of waist support frame;
 A pair of arm resting frame;
 A pair of leg support frame;
 A screen frame;
 A pair of pedal foot board.

Orthopedics Tractor Rack

» GT602-401

Orthopedics Tractor Rack



Features:

GT602-401 orthopedics tractor rack can form a complete set for use with each kind of operating table, which is mainly used in the operation of leg. In the operation, by using this rack, the patient's leg can be performed side traction, prone traction and open-up position of the body. Combination with various types of supporting the use of the operating table.

Technical Specification:

Length: 1650±50mm
Width: 450±50mm
Maximum and minimum height: (700-1000) ±50mm
Traction travel: 0-140mm
Traction feet a horizontal arm cape: 0-180°

Chair-mounted Dental Unit

» GT601-110

Chair-mounted Dental Unit



Standard Equipment:

24V DC motor for chair(synchronized) 1set, Auto spittoon flushing and cup filler control system 1set, 9 Programs inter-lock control system 1set, Instrument tray with air break and rotatable handpiece holder 1set, Rotatable glass spittoon 1set, 3-way syringe(hot/cold) 2sets, Multi-function foot controller 1set, High suction and saliver ejector system 1set, Seamless cushion(foldable headrest) 1set, Water tank(outer) 1set, Build-in floor box with main switch 1set, LED operating light 1set, LED film viewer 1set.

Options:

Imported 4-hole high speed handpiece,
Imported 4-hole low speed handpiece,
Endoscope system, Curing light, Scaler,
Top-mounted instrument tray

Chair-mounted Dental Unit

» GT601-111

Chair-mounted Dental Unit



Standard Equipment:

24V DC motor for chair(double armrest) 1set, Auto spittoon flushing and cup filler control system 1set, Control system(without memory) 1set, Instrument tray with air break(down-mounted) 1set, Build-in floor box with main switch(Moisture electric) 1set, Rotatable handpiece holder 1set, Glass spittoon 1set, Foldable headrest 1set, Seamless cushion(PU) 1set, Multi-function foot controller 1set, High suction and saliver ejector system 1set, Outer water tank 2sets, Imported medical water/gas pipe 1set, LED-1 operation light 1set, LED film viewer 1set, 3-way syringe(hot/cold) 2sets.

Optional Accessories:

Ceramic spittoon, Endoscope system, Outer floor box, Imported electro-motor, Imported/domestic 4 holes high speed handpiece, Imported/domestic 4 holes low speed handpiece, Imported/domestic curing light, Imported/domestic scaler, Central suction system, Oilless compressor.

X-RAY Machine



» GT601-120

X-RAY Machine

Main Purpose and Features:

This X-ray apparatus features full-wave rectification and modular X-ray tube head. The frame of the unit, of cantilever construction, is compact in design easy of movement. The machine can be used for radiography in hospital wards or operating rooms.

Main Technical Data :

- Power requirements
Voltage: 180-240V Frequency: 50Hz
Internal resistance: $\leq 1\Omega$ Rating: 5.5Kv A
Current: Maimum15A for radiography
- Time: 0.063 to 2.5 steps electronic
- Maximum height from X-ray tube focus to floor > 1720mm
- Minimum height from X-ray tube focus to floor < 500mm
- Collimator: Maximum film size at 1000mm
Focal distance: 400x400mm
- Maximum remote control distance: 6m
- X-ray tube focus: 216
- Unit moving force: $\leq 250N$
- Net weight of the unit: 95kg

Maximum ratings

Kv \ S mA	1.0	2.5	4.0	5.0
30	90	90	90	90
40	90	90	90	/
50	90	80	/	/

» GT601-121

X-RAY Machine

Main Usage and Features:

This X-ray apparatus features fullwave rectification and modular X-ray tube head. The frame of the unit is of cantilever construction, and is compact in design and easy in movement. The machine can be used for Radiography in hospital wards or operating rooms.

Maximum ratings

Current(mA)	Voltage (kvp)	Exposure time(second)
30	90	0.063-5.0
50	90	0.063-1.0
50	80	0.063-4.0
70	70	0.063-1.0



Main Technical Data :

- Power requirements
Voltage: 180-240V Frequency: 50Hz
Internal resistance: $\leq 0.8\Omega$ Rating: 5.5Kv A
Current: Maimum15A for radiography
- Time: 0.063 to 5.0 steps electronic
- Maximum height from X-ray tube focus to floor > 1720mm
- Minimum height from X-ray tube focus to floor < 500mm
- Collimator: Maximum film size at 1000mm
Focal distance: 400x400mm
- Maximum remote control distance: 6m
- X-ray tube focus: 216
- Unit moving force: $\leq 250N$
- Net weight of the unit: 95kg

X-RAY Machine



Usage:

Take x-ray photography of the head, extremities, chest cavity and other parts of human.
Can be used in the ward or in operation room.

>> GT601-122

X-RAY Machine

Main Features:

- Single focus, full-wave rectifier, combined X-ray generator.
- SCM control (easy to maintain and repair).
- High visual and operational console with LCD monitor.
- Prestore 8 kinds of photography parameters and select, modify, store the parameters under the condition of choice.
- Power voltage (V), photograph kilovolt (KV) infinitely variable control.
- Premier high voltage with high power SCR zero control circuit
- Function of load chains, exposure time control, auto alarm, preheat filament, subassemblies' temperature control, and so on.
- Cantilever structure makes the small volume and easily moving.

Focus of X-ray tube	Photograph Current (mA)	Max Photograph Voltage (kvp)	Max Allowable Exposure Time
Big Focus	16	90	6.3
	32	90	6.3
	63	90	4.0
	100	80	3.2

Main Technical Indexes:

- Power supply Voltage: 180-240 V Frequency: 50HZ Internal resistivity <1.0Ω Current 35A instant Rating ≥8Kv A
- Photography: Voltage: 50-90 Kv current 16ma, 32ma 63ma 100ma time 0.08s ~6.3s X-ray tube focus 4.3mm X4.3mm
- Maximum remote control distance: 7m
- Maximum height of focal spot from floor>1725-1775 mm Minimum height of focal spot from floor <480-535 mm
- Columns turning angle:±45
- Collimator: maximum film size at 1000mm focal distance: 400 mm X 400 mm
- The net weight of the unit: 150kg Gross Weight: 230kg
- Shipping volume: 150cm X 80cm X 150cm



Usage:

General photography, ray-filter photography.

Main Features:

- Single focus, full-wave rectifier, combined X-ray generator
- SCM control (easy to maintain and repair)
- High visual and operational console with LCD monitor
- Prestore 8 kinds of photography parameters and select, modify, store the parameters under the condition of choice
- Power voltage (V), photograph kilovolt (KV) infinitely variable control
- Premier high voltage with high power SCR zero control circuit
- Function of load chains, exposure time control, auto alarm, preheat filament, subassemblies temperature control, and so on
- Cantilever structure makes the small volume and easily moving

>> GT601-123

X-RAY Machine

Main Technical Indexes:

- Power supply Voltage: 180-240 V Frequency: 50HZ Internal resistivity <1.0Ω Current 35A instant Rating ≥10Kv A
- Photography: Voltage: 50-90 Kv current 15mA, 30mA, 60mA, 100mA time 0.04s~6.3s X-ray tube focus 4.3mm X4.3mm
- Maximum remote control distance: 7m
- Maximum height of focal spot from floor>1800 mm Minimum height of focal spot from floor <720 mm
- Collimator: maximum film size at 1000mm focal distance: 400 mm X 400 mm
- The net weight of the unit: 150kg gross Weight: 240kg
- Shipping volume: 150cm X 100cm X 150cm

Shadowless Operation Lamps



>> GT153-800L

Single-reflector Luminescence Lamp for Aurgical Operation

Illumination Lx	≥ 30000	Rated Voltage of Bulb	AC 24V
Color Temperature(K)	3500 ± 500	Rated POWER of Bulb	25W
Color Rendering index(Ra)	$100 \geq Ra \geq 85$	Input power	60VA
Power Supply	AC 220 $\pm 10\%$, 50Hz		



>> GT153-040B

AC/DC/Vertical 4-reflector Luminescence Shadowless Lamp

Illumination Lx	$160000 \geq Ec \geq 40000$	Rated Voltage of Bulb	AC 24V
Color Temperature(K)	4000 ± 500	Rated POWER of Bulb	100W
Color Rendering index(Ra)	$100 \geq Ra \geq 85$	Input power	180VA
Power Supply	AC 220 $\pm 10\%$, 50Hz, DC24V		



>> GT153-050L

Hoisted 5-reflector Luminescence Shadowless Lamp

Illumination Lx	$160000 \geq Ec \geq 40000$	Rated Voltage of Bulb	AC 24V
Color Temperature(K)	4000 ± 500	Rated POWER of Bulb	125W
Color Rendering index(Ra)	$100 \geq Ra \geq 85$	Input power	150VA
Power Supply	AC 220 $\pm 10\%$, 50Hz		



>> GT153-090L

9-reflector Shadowless Lamp

Illumination Lx	$160000 \geq Ec \geq 90000$	Rated Voltage of Bulb	AC 24V
Color Temperature(K)	4000 ± 500	Rated POWER of Bulb	225W
Color Rendering index(Ra)	$100 \geq Ra \geq 85$	Input power	280VA
Power Supply	AC 220 $\pm 10\%$, 50Hz		



>> GT153-120L

12-reflector Shadowless Lamp

Illumination Lx	$160000 \geq Ec \geq 120000$	Rated Voltage of Bulb	AC 24V
Color Temperature(K)	4000 ± 500	Rated POWER of Bulb	300W
Color Rendering index(Ra)	$100 \geq Ra \geq 85$	Input power	350VA
Power Supply	AC 220 $\pm 10\%$, 50Hz		



>> GT153-125L

Major & Auxliary Luminescence Shadowless Lamp

Illumination Lx	Main lamp $160000 \geq Ec \geq 120000$ Lx Supple mentary lamp $160000 \geq Ec \geq 50000$ Lx		
Color Temperature(K)	4000 ± 500	Rated Voltage of Bulb	AC 24V
Color Rendering index(Ra)	$100 \geq Ra \geq 85$	Rated POWER of Bulb	425W
Power Supply	AC 220 $\pm 10\%$, 50Hz	Input power	500VA

Shadowless Operation Lamps



>> GT153-104 Shadowless Operation Lamps

Features:

Imported LED cold light source.
The white LED enhance the chromatic aberration between blood, other body tissues and organs, and it thus helps the operating doctor to have a clearer view.
The service life of LED shadowless lamp is long (50,000 h)

Technical Specification:

- Diameter of lighthouse: 78
- Diameter of spot D10(mm): 180±15
- Diameter of spot D50(mm): 100±15
- Color rendering index(Ra): 95
- Color temperature(K): 3500, 4000, 4500
- Working distance(cm): 70-150
- Power supply: 100-240V, 50/60HZ
- Max. power consumption(W): 150VA

>> GT153-105 Shadowless Operation Lamps

Features:

Imported LED cold light source.
The white LED enhance the chromatic aberration between blood, other body tissues and organs, and it thus helps the operating doctor to have a clearer view.
The service life of LED shadowless lamp is long (50,000 h)

Technical Specification:

- Diameter of lighthouse: 61
- Diameter of spot D10(mm): 180±15
- Diameter of spot D50(mm): 100±15
- Color rendering index(Ra): 95
- Color temperature(K): 3500, 4000, 4500
- Working distance(cm): 70-150
- Power supply: 100-240V, 50/60HZ
- Max. power consumption(W): 120VA



>> GT153-106 Shadowless Operation Lamps

Features:

Imported LED cold light source.
The white LED enhance the chromatic aberration between blood, other body tissues and organs, and it thus helps the operating doctor to have a clearer view.
The service life of LED shadowless lamp is long (50,000 h)

Technical Specification:

- Diameter of lighthouse: 78
- Diameter of spot D10(mm): 180±15
- Diameter of spot D50(mm): 100±15
- Color rendering index(Ra): 95
- Color temperature(K): 4500±500
- Working distance(cm): 70-150
- Power supply: 100-240V, 50/60HZ
- Max. power consumption(W): 150VA





>> GT153-107 Shadowless Operation Lamps

Features:

Imported LED cold light source.
The white LED enhance the chromatic aberration between blood, other body tissues and organs, and it thus helps the operating doctor to have a clearer view.
The service life of LED shadowless lamp is long (50,000 h)

Technical Specification:

- Diameter of lighthouse: 61
- Diameter of spot D10(mm): 180±15
- Diameter of spot D50(mm): 100±15
- Color rendering index(Ra): 95
- Color temperature(K): 4500±500
- Working distance(cm): 70-150
- Power supply: 100-240V, 50/60HZ
- Max. power consumption(W): 120VA



>> GT153-108 Shadowless Operation Lamps

Features:

Imported LED cold light source.
The white LED enhance the chromatic aberration between blood, other body tissues and organs, and it thus helps the operating doctor to have a clearer view.
The service life of LED shadowless lamp is long (50,000 h)

Technical Specification:

- Diameter of lighthouse: 61
- Diameter of spot D10(mm): 180±15
- Diameter of spot D50(mm): 100±15
- Color rendering index(Ra): 95
- Color temperature(K): 4500±500
- Working distance(cm): 70-150
- Power supply: 100-240V, 50/60HZ
- Max. power consumption(W): 120VA

>> GT153-109 Vertical Shadowless Lamps

Features:

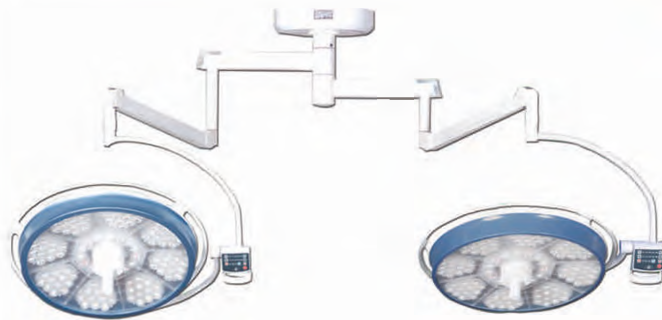
The LED shadowless lamp is pure-DC power supplied, without any strob or harmonic. The service life of LED shadowless lamp is long (35,000 h)

Technical Specification:

- Color rendering index(Ra): 100≥Ra≥85
- Color temperature(K): 3000≤Tc≤6700
- Power supply: 220 ±20%, 50Hz
- Max. power consumption(W): ≤100VA



Shadowless Operation Lamps



>> GT153-101 Shadowless Operation Lamps

Features:

Imported LED cold light source.
The white LED enhance the chromatic aberration between blood, other body tissues and organs, and it thus helps the operating doctor to have a clearer view.
The service life of LED shadowless lamp is long (50,000 h)

Technical Specification:

- Diameter of lighthouse: 78/78
- Diameter of spot D10(mm): 180±15
- Diameter of spot D50(mm): 100±15
- Color rendering index(Ra): 95
- Color temperature(K): 3500, 4000, 4500
- Working distance(cm): 70-150
- Power supply: 100-240V, 50/60HZ
- Max. power consumption(W): 300VA

>> GT153-102 Shadowless Operation Lamps

Features:

Imported LED cold light source.
The white LED enhance the chromatic aberration between blood, other body tissues and organs, and it thus helps the operating doctor to have a clearer view.
The service life of LED shadowless lamp is long (50,000 h)

Technical Specification:

- Diameter of lighthouse: 78/61
- Diameter of spot D10(mm): 180±15
- Diameter of spot D50(mm): 100±15
- Color rendering index(Ra): 95
- Color temperature(K): 3500, 4000, 4500
- Working distance(cm): 70-150
- Power supply: 100-240V, 50/60HZ
- Max. power consumption(W): 270VA



>> GT153-103 Shadowless Operation Lamps

Features:

Imported LED cold light source.
The white LED enhance the chromatic aberration between blood, other body tissues and organs, and it thus helps the operating doctor to have a clearer view.
The service life of LED shadowless lamp is long (50,000 h)

Technical Specification:

- Diameter of lighthouse: 61/61
- Diameter of spot D10(mm): 180±15
- Diameter of spot D50(mm): 100±15
- Color rendering index(Ra): 95
- Color temperature(K): 4500±500
- Working distance(cm): 70-150
- Power supply: 100-240V, 50/60HZ
- Max. power consumption(W): 240VA





>> GT153-700 III Shadowless Operation Lamps

Features:

The no welding titanium alloy main arm is adopted, so that the appearance is aesthetic and the rotation is more flexible and convenient

Technical Specification:

• Illumination Lx	160000≥Ec≥80000
• Color temperature(K)	3000≤Tc≤6700
• Color rendering index(Ra)	100≥Ra≥85
• Diameter of spot D10(mm)	175±35
• Diameter of lamp holder	700
• Bulb power(24V)	150W
• Power supply	220 ±20%, 50Hz



>> GT153-700 IV Shadowless Operation Lamps

>> GT153-500 III Shadowless Operation Lamps

>> GT153-600 II Shadowless Operation Lamps

Features:

The no welding titanium alloy main arm is adopted, so that the appearance is aesthetic and the rotation is more flexible and convenient.

Technical Specification:

	GT153-700 IV	GT153-500 III	GT153-600 II
• Illumination Lx	160000≥Ec≥80000	100000≥Ec≥50000	120000≥Ec≥50000
• Color temperature(K)	3000≤Tc≤6700	3000≤Tc≤6700	3000≤Tc≤6700
• Color rendering index(Ra)	100≥Ra≥85	100≥Ra≥85	100≥Ra≥85
• Diameter of spot D10(mm)	175±35	175±35	175±35
• Diameter of lamp holder	700	500	600
• Bulb power(24V)	150W	150W	150W
• Power supply	220 ±20%, 50Hz	220 ±20%, 50Hz	220 ±20%, 50Hz

Shadowless Operation Lamps



>> GT153-700/700 III Shadowless Operation Lamps

Features:

The no welding titanium alloy main arm is adopted, so that the appearance is aesthetic and the rotation is more flexible and convenient

Technical Specification:

- Illumination Lx 160000≥Ec≥80000
- Color temperature(K) 160000≥Ec≥80000
- Color rendering index(Ra) 3000≤Tc≤6700
- Diameter of spot D10(mm) 100≥Ra≥85
- Diameter of lamp holder 175±35/175±35
- Bulb power(24V) 700/700
- Power supply 150/150
- 220 ±20%, 50Hz



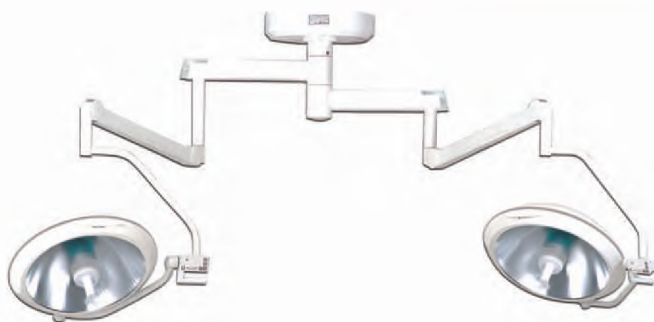
>> GT153-700/500 III Shadowless Operation Lamps

Features:

The no welding titanium alloy main arm is adopted, so that the appearance is aesthetic and the rotation is more flexible and convenient

Technical Specification:

- Illumination Lx 160000≥Ec≥80000
- Color temperature(K) 160000≥Ec≥50000
- Color rendering index(Ra) 3000≤Tc≤6700
- Diameter of spot D10(mm) 100≥Ra≥85
- Diameter of lamp holder 175±35
- Bulb power(24V) 700/500
- Power supply 150/150
- 220 ±20%, 50Hz



>> GT153-500/500 III Shadowless Operation Lamps

Features:

The no welding titanium alloy main arm is adopted, so that the appearance is aesthetic and the rotation is more flexible and convenient

Technical Specification:

- Illumination Lx 100000≥Ec≥50000
- Color temperature(K) 100000≥Ec≥50000
- Color rendering index(Ra) 3000≤Tc≤6700
- Diameter of spot D10(mm) 100≥Ra≥85
- Diameter of lamp holder 175±35
- Bulb power(24V) 500/500
- Power supply 150/150
- 220 ±20%, 50Hz

Ultrasound Scanner



>> GT603-311

Ultrasound Scanner



Keyboard



Convex probe



High frequency linear probe



Cardiac probe



Trans-vaginal probe

Main technical features:

Monitor: 10 inch Scanning mode: B, B+B, B+M, M, 4B
 Image gray scale: 256 TCG adjustment: 8 segments
 Depth adjustment: 40mm-240mm Storage: U plate
 Dynamic range: 100 dB Focus adjusting: available
 Cine loop: 512 Partial zoom: 2.0 (real time and frozen)
 Depth promote: In B, B+B mode Reversal: Up/down, left/right
 Measurement & calculation: distance, area, circumference,
 heart rate depth and valve speed.
 Obstetric checking software: for BPD; FL; CRL; GS; HC; AC;
 fetus weight, delivering date, pregnancy time.
 Display info: Patient information input: date and registration code display,
 full screen wording function.
 Body marks: 60 USB port: available
 Power consumption: < 150VA

Configuration:

3.5MHz (80 elements, R=50mm) Convex probe

Options:

- 7.5 MHz (80 elements) High frequency linear probe
- 3.5 MHz (80 elements, R=20mm) Cardiac probe
- 6.5 MHz (80 elements, R=11mm) Trans-vaginal probe
- Trolley
- LCD monitor
- MITSUBISHI P93C Thermal Printer

>> GT603-312

Ultrasound Scanner

Features:

10.1"high-resolution TFT LCD
 At 1.5KG
 Probe Frequency:2.5MHZ-10.0MHZ(Depend on the probe types)
 Probe connector:1
 Continuous dynamic variable aperture, Continuous dynamic focusing,
 wide band pre-amplification, log compression, TGC control,
 dynamic filtering, edge enhancement and frame correlation, ETC.

Display mode: B,B/B,4B,B/M,M
 Scanning methods: Electronic convex/ Electronic linear
 Image reversing: Up/down, left/right, Black/White
 Depth upgrade, zoom and scroll control, Overall gain, brightness,
 contrast control.
 Cine loop:256 frames, playback selectable, can be saved in USB disk or
 SD card and recalled for analysis.
 General measurement: distance, volume, circumference, area/perimeter,
 angle, heart rate, fetus weight, pregnancy week, etc.
 More than forty difference body marks
 Image displayed with comments of date, time, scanning depth, probe type,
 parameter of frame correlation, focus combination, patient ID, age, sex and
 hospital information.



Preset: time, date, hospital name, fetal weight formula,
 image format, etc.
 USB 2.0 interface ensures real-time image transfer to PC.
 Support USB mouse operation.
 Report page print.

Probes for human:

Convex probe, Trans-vaginal probe, Linear probe,
 Cardiac probe.

Ultrasound Scanner



» GT603-313

Ultrasound Scanner

Features:

Cutting-edge Digital Technology
DBF Digital Beam-forming
DFS Numerical control Dynamic frequency scanning
DRF Dynamic receiving focusing
RDA Real-time dynamic aperture
TDF Time and Dimensional filtration
Real-time dynamic apodization
8-segment TGC adjustor
Built-in high-speed MPU
English-Chinese interface
Extensive Software Packages
USB Port

Configuration:

- Convex Probe (80element)
- Cine Loop
- 2 USB Ports
- High resolution 14 inch VGA Monitor
- B, 4B, B/B B/M, M

Option:

- Trans-vaginal Probe (80 element)
- Video printer
- 15' LED color monitor
- Cardiac probe
- High Frequency probe

» GT603-314

Ultrasound Scanner

Technical Specification:

Displaying mode: B, 2B, 4B, B/M, M
B/C, B/C/C, B/D, CFM, PRF, PW, velocity,
power direction, histogram
Triplex/Duplex.

Imaging Processing Technology:

Imaging optimization technology,
Compound enhance technology
Muti beam parallel processing technology
Itouch
Tissue Harmonic Imaging
Probe: Electronic convex, linear, trans-vaginal
Wide band multi frequency.

Standard Configuration:

Main Unit, 3.5MHZ convex probe, 15"LCD,
2 probe connectors, Hard Disk(500G), 2USB port.

Options:

3.5MHZ cardiology probe, 6.5MHZ Trans-vaginal probe, 7.5MHZ linear probe, 3.5MHZ volume probe, DICOM 3.0,
Trolley, Video printer, Laser printer.



Suction Machine



>> GT620-102 Suction Machine

Mains: AC 220V±10% 50Hz
Pump Structure: oil-free pump
Negative Pressure: ≥0.08MPa
Air Pumping Efficiency: ≥15L/min
Adjustment Range of Negative Pressure: 0.013~0.08 MPa
Input Power: 150VA
Noise Level: ≤50dB
Liquid Vessel: 1000ml



>> GT620-118 Suction Machine

Technical Specification:

- Mains:
- Pump Structure:
- Negative Pressure:
- Air Pumping Efficiency:
- Adjustment Range of Negative Pressure:
- Input Power:
- Noise Level:
- Liquid Vessel:

GT620-118

AC 220V±10% 50Hz
 oil-free pump
 ≥0.07MPa
 ≥15L/min
 0.013~0.07 MPa
 150VA
 ≤55dB
 1000ml



>> GT620-109 Suction Machine (mobile setup)

GT620-109

AC 220V±10% 50Hz
 imported film type pump
 ≥0.09MPa
 ≥25L/min(35L pump suitable)
 0.013~0.09 MPa
 400VA
 ≤55dB
 2500mlx2



>> GT620-122 Suction Machine (plastic cover)

GT620-122

AC 220V±10% 50Hz
 imported film type pump
 ≥0.09MPa
 ≥25L/min(35L pump suitable)
 0.013~0.09 MPa
 150VA
 ≤55dB
 2500mlx2

Suction Machine



GT620-120 Suction Machine

Mains: AC 220V±10% 50Hz
Pump Structure: imported film type pump
Negative Pressure: ≥0.09MPa
Air Pumping Efficiency: ≥25L/min
Adjustment Range of Negative Pressure: 0.013~0.09 MPa
Input Power: 150VA
Noise Level: ≤55dB
Liquid Vessel: 2500mlx2



GT620-105 Suction Machine (portable)

Technical Specification:

- Mains:
- Pump Structure:
- Negative Pressure:
- Air Pumping Efficiency:
- Adjustment Range of Negative Pressure:
- Input Power:
- Noise Level:
- Liquid Vessel:

GT620-105
 AC 220V±10% 50Hz
 oil-free pump
 ≥0.09MPa
 ≥25L/min
 0.013~0.09 MPa
 150VA
 ≤50dB
 1000mlx2



GT620-106 Suction Machine (AC/DC)

GT620-106
 AC 220V±10% 50Hz DC12V
 oil-free pump
 ≥0.09MPa
 ≥20L/min
 0.013~0.09 MPa
 150VA
 1000ml



GT620-113 Suction Machine (portable)

GT620-113
 AC 220V±10% 50Hz
 oil-free pump
 ≥0.09MPa
 ≥25L/min
 0.013 ~ 0.09 MPa
 150VA
 ≤50dB
 1000mlx2

Stomach Cleaning Machine



>> GT620-201 Stomach Cleaning Machine

Mains: AC 220V±10% 50Hz
 Pump Structure: Impulse pump
 Negative Pressure: 2L/min in rushing;
 2L/min in suction
 Input Power: 100VA
 Noise Level: ≤55dB±25%
 Liquid Vessel: 5000mlx2

Mode of stomach cleaning: Manual,
 Auto(auto-suction time adjustable)

>> GT620-203 Stomach Cleaning Machine

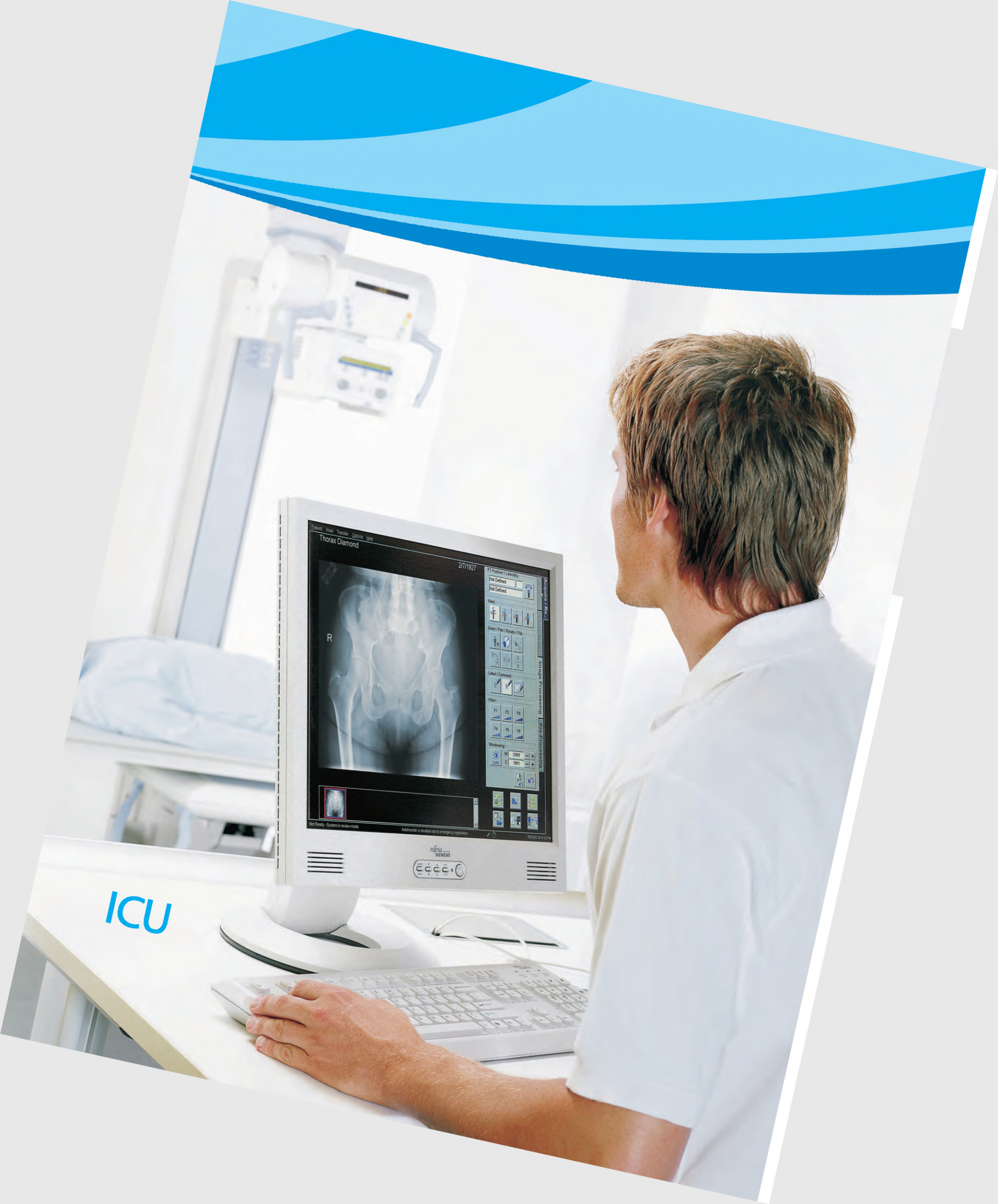
Mains: AC 220V±10% 50Hz ±1 Hz
 Pump Structure: oil-free diaphragm pump
 Washing capacity: <500ml each time
 Suction capacity: <600ml each time
 Pressure for stomach cleaning: -0.05Mpa ~ +0.05Mpa
 Frequency of stomach cleaning: ≤ 20s
 Input Power: 80VA ±25%
 Noise Level: ≤55dB



>> GT620-204 Stomach Cleaning Machine

Mains: AC 220V±10% 50Hz ±1 Hz
 Pump Structure: oil-free diaphragm pump
 Washing capacity: <500ml each time
 Suction capacity: <600ml each time
 Pressure for stomach cleaning: -0.05Mpa ~ +0.05Mpa
 Frequency of stomach cleaning: ≤ 20s
 Input Power: 80VA ±25%
 Noise Level: ≤55dB





ICU

Thorax Diamond 2/1/1927

Acquisition / Post-Processing / Image Processing / Store / Processing

Not Ready - System in review mode

Autotracker is disabled due to emergency registration

19/02/2005 10:41:02 AM

Hospital Bed



>> GT501-537

Hospital Bed

- 7 Function electric bed
- 4 Section PP guard rail
- Powder coating steel frame
- Removable ABS head and foot bed board
- Central locking castors
- Pedal control system
- Size: 219x109x63cm



>> GT501-540

Hospital Bed

- 4 Section ABS guard rail
- Powder coating steel frame
- Central locking ABS castors
- Digital weight function
- Pedal control system
- Size: 217x104x50cm



>> GT501-541

Hospital Bed

- ABS side rails
- Powder coating mild steel frame
- Central control locking castors
- Size: 217x103x45cm



>> GT501-542

Hospital Bed

- Folding steel Guadrails
- Detachable ABS bed panel
- Powder coating mild steel frame
- Pedal locking castors
- Manual and electrical elevating system
- Size: 205x96x43cm

Hospital Bed



>> GT501-306

Hospital Bed

Electric three functions, Metal net panel
Aluminum removable guard rails
Powder coating mild steel frame
Central control locking castors
Electric lifting system with CE.UL approval
Detachable ABS head and food bed-board
Size: 210x102x51cm



>> GT501-546

Hospital Bed

Removable flip down ABS Guardrails
Electric two functions ABS bed panel
Powder coating mild steel frame
Pedal locking castors
Size: 209x95x47cm



>> GT501-303

Hospital Bed

Electric two functions, metal net panel
Detachable ABS head and foot bed-boards
Aluminum removable guardrails
Powder coating steel frame
Pedal locking castors
Size: 209x102x28cm



>> GT501-547

Hospital Bed

5 Function electric bed
Aluminum frame and platform
Wooden head and food bed board
Aluminum foldable guard rail
2" Lockable castor
Size: 209x90x33cm



» GT501-548

Hospital Bed

Wooden bed panel & guardrails
 Powder coating mild steel frame
 Pedal locking castors
 Size: 209x96x44cm



» GT501-549

Hospital Bed

Electric three functions, Metal flat bed panel
 Wooden head and foot bed-boards
 Folding aluminum guardrail
 Powder coating steel frame
 Pedal locking castors
 Size: 209x96x49cm



» GT501-304

Hospital Bed

Electric two functions, metal net panel
 Wooden head and foot bed-boards
 Detachable guardrails
 Powder coating steel frame
 Size: 209x96x28cm

» GT501-307

Hospital Bed

Electric three functions, Metal flat bed panel
 Wooden head and foot bed-boards
 Aluminum removable guardrails
 Powder coating steel frame
 Pedal locking castors
 Double motor lifting system
 Size: 213x101x34cm



Hospital Bed



>> GT501-550

Fysiocouch

Length:200cm

Dynamic max load:200kg

Static max load:250kg

Adjustable height from 46cm to 95cm raised by actuator system

Three main pillows supported and angle-adjusted by gas springs

Armrests height and direction adjustable(optional parts)

Wheel lifting(central wheel lift, dual wheel lift)

Size: 174x75x60cm



>> GT501-551

Fysiocouch

Length:210cm

Dynamic max load:200kg

Static max load:250kg

Adjustable height from 46cm to 95cm raised by actuator system

Two main pillows supported and angle-adjusted by gas springs

Wheel lifting(central wheel lift, dual wheel lift)

Size: 214x75x60cm



>> GT501-102

Manual Stainless Steel Bed

Two functions, stainless steel frame

Stainless steel head and foot bed-boards

Detachable guardrails

Double handle knobs



>> GT501-552

Steel Standard Bed

Metal flat board

Powder coating steel frame

>> GT501-553

Hospital Bed

Two functions manual bed

Metal flat panel, powder coating steel frame, removable head and foot bed-boards

Aluminum foldable guard rail

5" Castor with lock

Size: 224x102x32cm





>> GT501-554

Hospital Bed

Two functions, metal net panel
 Aluminum removable guardrails
 Powder coating mild steel frame
 Pedal locking castors
 Size: 209x102x28cm



>> GT501-555

Hospital Bed

One functions manual bed
 Powder coating steel frame
 Removable ABS head and food bed board
 Foldable aluminum guard rail
 5"Castor with lock
 Size: 209x102x28cm



>> GT501-537

Hospital Bed

Material: Steel Framework,
 ABS & PP for Plastic Part
 Dimension: 2200mm(L) x 1050mm(W) x 590mm-680mm
 Bed Board: 1950mm x 900mm
 Castor: 150mm Swivel (Central Locking)
 Features: 5 functions mechanical bed with cranking system
 Backrest (0-70°), Footrest (0-40°)
 Hi-Low(680mm-590mm)
 Trendelenburg (10°) & Rev. Trendelenburg (10°)
 all achieved by manually operated.

>> GT501-535

Hospital Bed

Multi-functions electric bed
 Oversize: 2200mm(L) x 1050mm(W) x 510mm-710mm
 Bed Board: 1945mm x 900mm
 Backrest (0-70°), Foot-rest (0-40°)
 Hi-low(710mm-510mm), Trendelenburg(12°)
 &Rev Trendelenburg (12°)
 Reset function, bed could back to "Zero"position
 quickly.



Hospital Bed



» GT501-538

Hospital Bed

Material: Steel framework, ABS & PP for plastic part.

Dimension: 2080mm(L) x980mm(W)x475mm (Height fixed)

BED BOARD: 1910mm x830mm

Net Weight: 65kg

Load Capacity: < 250kg

Features; 5 functions mechanical bed with cranking system

Backrest (0-70°), Footrest (0-40°)

Hi-Low(680mm-590mm)

Trendelenburg (10°) & Rev. Trendelenburg (10°)
all achieved by manually operated.

» GT501-316

Hospital Bed

Three functions: backrest, kneepart the

height of whole bed are adjustable

Aluminum alloy protective railing

PE head&foot board (2pcs)

2Pcs castors without locking brake

Stainless frame, easy to move and clean

Left and right leg parts position can be

raised up by cranks,convenient for

treatment and use



» GT501-539

Hospital Bed

Dimension: 2200mm(L)x1050mm(W)x510mm-710mm

Bed Board: 1945mm x 900mm

Backrest (0-70°) Footrest (0-40°)

Hi-Low(710mm-510mm)

Trendelenburg (12°) & Rev.Trendelenburg (12°)

all achieved by electrically controlled, with indicator light to show the work status.

"Reset" function, bed could back to "Zero" position quickly.



>> GT501-317

Hospital Bed

Dimension: 2155mm(L)x1050mm(W)
x430mm-640mm

Detachable PP plastic head&foot board,
powder coated steel bed board with
ventilated holes 4pcs 125cm
central-control system castors

Three-functions, three motors.

Functions controlled by remote control

Hi-low: 640mm-430mm

Back-rest lifting angle: 0-75°

Knee-rest lifting angle: 0-35°

Standard accessory: I.V.pole



>> GT501-543

Hospital Bed

Dimension: 2230mm(L)x970mm(W)x465mm-670mm

Bed board: 1930mm x 900mm

Equip with one hand held remote control, for patient
adjust bed position easily

Backrest (0-70°) Footrest (0-40°) Hi-Low(670mm-465mm)
all achieved by electrically controlled



>> GT501-544

Hospital Bed

Multi-functions electric bed

Oversize: 2330mm(L) x 1050mm(W) x 530mm-710mm

Bed Board:1955mm x 900mm

Backrest (0-65°), Foot-rest (0-43°)

Hi-Low(710mm-530mm)

Trendelenburg (10°) & Rev. Trendelenburg(10°)

all achieved by electrically controlled, with indicator light
to show the work status.

>> GT501-545

Hospital Bed

Five functions electric bed

Oversize: 2330mm(L) x 1050mm(W) x 530mm-710mm

Bed Board:1955mm x 900mm

Backrest (0-65°), Foot-rest (0-43°)

Hi-Low(710mm-530mm)

Trendelenburg (10°) & Rev. Trendelenburg(10°)

all achieved by electrically controlled, with indicator light
to show the work status.

"Reset" function , bed could back to "Zero" position quickly.



Baby Bed



>> GT505-001
 Stainless Steel Baby Bed
 Specification: 1600x800x700mm



>> GT505-002
 Stainless Steel Double-rocker Baby Bed
 Specification: 1600x800x700mm/1370mm



>> GT505-003
 Baby Bed
 Specification: 800x410x920mm



>> GTGT505-004
 Stainless Steel Double-rocker Baby Bed
 Specification: 730x450x610mm/960mm



>> GT505-005
 Baby Bed
 Specification: 820x460x650/900mm



>> GT505-006
 Baby Bed
 Specification: 820x460x750/1000mm



Color
 A 
 B 
 C 

>> GT505-007
 Luxury Baby Bed
 Specification: 660x480x780/980mm

Bedside Cabinet



»» **GT502-105N**
Bedside Cabinet
Material: metal frame, ABS components



»» **GT502-101N**
Bedside Cabinet
Material: ABS



»» **GT502-102N**
Bedside Cabinet
Material: ABS



»» **GT502-103N**
Bedside Cabinet
Material: ABS



»» **GT502-106N**
Bedside Cabinet
Material: ABS



»» **GT502-107N**
Bedside Cabinet
Material: ABS



» GT550-101 Infant Incubator

Brief Introduction:

- Two temperature control modes: air mode and baby mode controlled by micro-computer.
- Use AC Power and DC Power alternatively, DC 12V or DC 24V Power on the ambulance.
- Set temperature, air temperature, baby temperature and internal battery voltage can be displayed separately.
- Failure alarm indication.
- Can be equipped with >37°C temperature set function.
- Double wall Acrylic glass hood with side door so that the bassinet can be pulled out from it.
- Natural air flow humidity.
- The height of whole unit can be adjusted.
- Oxygen supply system.
- Observation lamp.

Standard Configuration:

Main body (including the Acrylic glass hood, temperature controller, bassinet, internal battery, and observation lamp), oxygen cylinders oxygen supply system, skin temperature sensor, I.V. Pole, mattress, adjustable stand).

Optional configuration: >37°C override temperature mode.

Requirements of Environment

Environment temperature: 10 °C~30°C.
(Set temperature should be higher 3°C than the environment temperature).
Wind speed of environment: ≤ 1.0m/s.

Specification

- AC Power supply: AC220V-230V, 50Hz.
- DC Power supply: DC12V/10A or DC24V/6A.
- Input power: 400VA.
- Mode of control: Air mode and baby mode controlled by micro-computer.
- Control range of air temperature: 25°C-37°C (Override mode 37°C-38°C).
- Control range of baby temperature: 34°C-37°C (Override mode 37°C-37.5°C).
- Accuracy of skin temperature sensor: ≤0.3°C.
- Variability of temperature: ≤ 1.0°C.
- Uniformity of temperature: ≤ 1.5°C.
- Noise inside hood: ≤60dB(A).
- Failure alarm: over-temperature alarm, temperature deviation alarm, sensor alarm, motor fan failed alarm, power failure alarm and so on.
- Running time of internal battery: 90min. (1 internal battery).

Package

Package: each unit is packed as two cartons
Size (Main body): 109mm x 65.5mm x 76mm.
(Cabinet): 138mm x 61mm x 40mm.
Gross Weight (Main body): 80Kg.
(Cabinet): 53Kg.





» GT550-107/107B Infant Incubator



Brief Introduction:

- Air mode control, set temperature and air temperature are displayed separately.
- Natural air flow humidity.
- Inclination of bassinet is adjustable.
- Failure alarm indication.
- RS-232 connector.
- GT550-107B is configured with fixed Neonate Bilirubin Phototherapy Equipment model (with blue fluorescence lamps).
- GT550-107B is configured with fixed Neonate Bilirubin Phototherapy Equipment model (with LED blue lights).

Standard Configuration:

GT550-107: Main body, mobile cabinet, temperature controller, baby compartment, I.V. pole, shelf.

GT550-107B: Based on GT550-107, with Neonate bilirubin phototherapy equipment (fixed model).

Optional parts: > 37°C temperature Override Mode function, Vertical Height Adjustment Stand(VHA Stand).

Requirements of Environment

Environment temperature: 20 °C~30°C.

(Set temperature should be higher 3°C than the environment temperature).

Wind speed of environment: ≤0.3m/s.

Package

Package: each unit is packed as one carton

Size: 108.5mm x 64mm x 112.5mm

Gross Weight: 80Kg (for YP-90)

90Kg (for YP-90B)



GT550-100



GT550-100B

» GT550-100/100B/108A/108B Infant Incubator

Brief Introduction:

- Air mode control, set temperature and air temperature are displayed separately.
- Natural air flow humidity.
- Failure alarm indication.
- RS-232 connector.
- GT550-100B, GT550-100AB are configured with fixed
- Neonate Bilirubin Phototherapy Equipment with blue fluorescence lamps).
- GT550-100B, GT550-100AB are configured with fixed
- Neonate Bilirubin Phototherapy Equipment (with LED blue lights).

Standard Configuration:

GT550-100: Main body, stand, temperature controller, baby compartment, I.V. Pole, shelf and so on.

GT550-108A: Based on GT550-100, added with the side door.

GT550-108B: Based on GT550-100, added with the Neonate bilirubin phototherapy equipment (fixed model).

Specification

- Power supply: AC220V-230V, 50Hz.
- Input power: 850VA.
- Mode of control: Air mode control by micro-computer.
- Control range of air temperature: 25°C-37°C.
- Variability of temperature: $\leq 0.5^{\circ}\text{C}$.
- Uniformity of temperature: $\leq 0.8^{\circ}\text{C}$.
- Noise inside hood: $\leq 60\text{dB(A)}$.
- Failure alarm: over temperature alarm, deviation alarm, sensor failure alarm, fan motor alarm, power failure alarm, system alarm and so on.



GT550-108A



GT550-108B

Requirements of Environment

Environment temperature: 20 °C~30°C.
(Set temperature should be higher 3°C than the environment temperature).

Wind speed of environment: $\leq 0.3\text{m/s}$.

Package

Package: each unit is packed as one carton

Size: 108.5mm x 64mm x 108mm

(GT550-100/GT550-108B)

108.5mm x 64mm x 112.5mm (GT550-108A)

Gross Weight: 72Kg (for GT550-100/GT550-108A)

83Kg (for GT550-108B)



» GT550-109A/109B Infant Incubator



Brief Introduction:

- Two control modes: Air mode and baby mode controlled by micro-computer.
- Set temperature, air temperature, baby temperature are displayed separately.
- Natural air flow humidity.
- Inclination of bassinet is adjustable.
- Failure alarm indication.
- RS-232 connector.
- GT550-109B is configured with fixed Neonate Bilirubin Phototherapy Equipment (with blue fluorescence lamps).
- GT550-109B is configured with fixed Neonate Bilirubin Phototherapy Equipment model (with LED blue lights).

Standard Configuration:

GT550-109A: Main body, mobile cabinet, temperature controller, baby compartment, I.V. pole, shelf.

GT550-109B: Based on GT550-109A, with Neonate bilirubin phototherapy equipment (fixed model).

Optional parts: > 37°C temperature Override Mode function, Vertical Height Adjustment Stand(VHA Stand).

Specification

- Power supply: AC220V-230V, 50Hz.
- Input power: 850VA.
- Mode of control: Air mode and baby mode controlled by micro-computer.
- Control range of air temperature: 25°C-37°C (override mode: 37-39°C).
- Control range of baby temperature: 34-37°C (override mode: 37-38°C).
- Accuracy of skin temperature sensor: $\leq 0.3^{\circ}\text{C}$.
- Variability of temperature: $\leq 0.5^{\circ}\text{C}$.
- Uniformity of temperature: $\leq 0.8^{\circ}\text{C}$ (mattress is on the horizontal position).
- Inclination of the bassinet: $\pm 12^{\circ}$.
- Noise inside hood: $\leq 60\text{dB(A)}$.
- Failure alarm: over temperature alarm, deviation alarm, sensor failure alarm, fan motor alarm, power failure alarm, system alarm and so on.

Requirements of Environment

Environment temperature: 20 °C~30°C.

(Set temperature should be higher 3°C than the environment temperature).

Wind speed of environment: $\leq 0.3\text{m/s}$.

Package

Package: each unit is packed as two cartons

Size (Main body): 108.5mm x 64mm x 91.5mm

(Cabinet): 112.5mm x 66.5mm x 73mm

Gross Weight(Main body):63Kg(for GT550-109A)

75Kg(for GT550-109B)

(Cabinet):68Kg



» GT550-106/105 Infant Incubator



Brief Introduction:

- Two control modes: Air mode and baby mode controlled by micro-computer.
- Humidity concentration display function (for GT550-106)
- Humidity concentration servo control (for GT550-105).
- Set temperature, air temperature, baby temperature, humidity concentration are displayed separately.
- >37°C temperature set function.
- Failure alarm indication.
- Embedded integrated sensor box.
- Integrated water reservoir in the shape of drawer (for GT550-105).
- Double wall Acrylic glass hood, automatic air circulation device.
- Inclination of bassinet is adjustable.
- RS-232 connector.

Standard Configuration:

GT550-106: Main body (including the Acrylic glad hood, temperature controller, bassinet), skin temperature sensor, I.V. pole, mattress, guard rail, mobile cabinet.

GT550-105: Based on GT550-106, with Humidity servo control.

Specification

- Power supply: AC220V-230V, 50Hz.
- Input power: 850VA (GT550-106)
1000VA (GT550-105).
- Mode of control: Air mode and baby mode controlled by micro-computer.
- Control range of air temperature: 25°C-37°C(override mode 37-39°C).
- Control range of baby temperature: 34-37°C(override mode 37-38°C).
- Accuracy of skin temperature sensor: $\leq 0.3^{\circ}\text{C}$.
- Variability of temperature: $\leq 0.5^{\circ}\text{C}$.
- Uniformity of temperature: $\leq 0.8^{\circ}\text{C}$ (mattress is on the horizontal position).
- Inclination of the bassinet: $\pm 12^{\circ}$.
- Noise inside hood: $\leq 60\text{dB(A)}$.
- Failure alarm: over temperature alarm, deviation alarm, sensor failure alarm, fan motor alarm, power failure alarm, sensor box position alarm and system alarm. (GT550-105 has low water alarm and tank position error alarm).
Indication range of humidity: 0%RH-99%RH.
- Control range of humidity: 0%RH-90%RH (for GT550-105).
- Accuracy of humidity: $\pm 10\%$ RH.

Optional Configurations:

Fixed Neonate bilirubin phototherapy equipment (with blue fluorescent lamps)
Fixed Neonate bilirubin phototherapy equipment (with LED blue lights)
Vertical Height Adjustment Stand (VHA Stand)
Weighing System

Requirements of Environment

Environment temperature: 20 °C~30°C.
(Set temperature should be higher 3°C than the environment temperature).
Wind speed of environment: $\leq 0.3\text{m/s}$.

Package

Package: each unit is packed as two cartons
Size (Main body): 108.5mm x 64mm x 91.5mm
(Cabinet): 112.5mm x 66.5mm x 73mm
Gross Weight (Main body): 63Kg (for GT550-106)
66Kg (for GT550-105)
(Cabinet): 68Kg



» GT550-102 Infant Incubator



Brief Introduction:

- Two control modes: Air mode and baby mode controlled by micro-computer.
- The information can be stored, consulted and indicated by the LCD display screen.
- Humidity and oxygen concentration display and servo control.
- The air circle with outlet in both front and back.
- >37°C temperature set function.
- Acrylic glass hood, air circulation system in the way of air outlet from front and back.
- X-ray cassette under the bassinets.
- Embedded integrated sensor module, integrated water reservoir in the shape of drawer.
- Inclination of bassinets is adjustable.
- The height of whole unit can be adjusted.
- Failure alarm indication.
- RS-232 connector.

Standard Configuration:

Baby compartment, main body, vertical height adjustment stand (VHA stand), Oxygen concentration servo control system, temperature controller, I.V. Pole and shelf.
Optional: Weighing system and monitor shelf.

Requirements of Environment

Environment temperature: 20 °C~30°C.
(Set temperature should be higher 3°C than the environment temperature).
Wind speed of environment: ≤0.3m/s.

Specification

- Power supply: AC220V-230V, 50Hz.
- Input power: 1300VA.
- Mode of control: Air mode and baby mode controlled by micro-computer.
- Control range of air temperature: 25°C-37°C (override mode 37-39°C)
- Control range of baby temperature: 34-37°C (override mode 37-38°C)
- Accuracy of skin temperature sensor: ≤0.3°C.
- Variability of temperature: ≤0.5°C.
- Uniformity of temperature: ≤0.8°C (mattress is on the horizontal position).
- Inclination of the bassinets: ±8°.
- Noise inside hood: ≤55dB(A).
- Failure alarm: over-temperature alarm, temperature deviation alarm, sensor alarm, motor fan failed alarm, power failure alarm and so on.
- Indication range of humidity: 0%RH~99%RH.
Control range of humidity: 0%RH~90%RH.
- Accuracy of humidity: ±6%RH.
- Indication range of oxygen concentration: 0%~99%.
- Control range of oxygen concentration: 20%~80%.
- Accuracy of oxygen concentration: ±3%.
- Range of weigh: 100-8000g.
- Resolution for weight indication: 1g.
- Accuracy of weigh: ±1%.

Package

Package: each unit is packed as two cartons
Size (Main body): 111mm x 71mm x 88.8mm.
(Cabinet): 103mm x 70mm x 83mm.
Gross Weight (Main body): 70Kg.
(Cabinet): 80Kg.





» GT550-104/103 Infant Incubator



Brief Introduction:

- Two control modes: Air mode and baby mode controlled by micro-computer.
- Humidity concentration servo control function and oxygen concentration display function.
- Humidity concentration and oxygen concentration servo control function (for GT550-103).
- Set temperature, air temperature, baby temperature, humidity concentration are displayed separately.
- >37°C temperature set function.
- Failure alarm indication.
- Embedded integrated sensor box.
- Integrated water reservoir in the shape of drawer.
- Double wall Acrylic glass hood, automatic air circulation device.
- Inclination of bassinet is adjustable.
- RS-232 connector.

Standard Configuration:

GT550-104: Main body (including the Acrylic glad hood, temperature controller, bassinet), skin temperature sensor, I.V. pole, mattress, guard rail, mobile cabinet.

GT550-103: Based on GT550-104, with Humidity servo control.

Specification

- Power supply: AC220V-230V, 50Hz
- Input power: 1000VA
- Mode of control: Air mode and baby mode controlled by micro-computer
- Control range of air temperature: 25°C-37°C(override mode 37-39°C)
- Control range of baby temperature: 34-37°C(override mode 37-38°C)
- Accuracy of skin temperature sensor: $\leq 0.3^{\circ}\text{C}$
- Variability of temperature: $\leq 0.5^{\circ}\text{C}$
- Uniformity of temperature: $\leq 0.8^{\circ}\text{C}$ (mattress is on the horizontal position)
- Inclination of the bassinet: $\pm 12^{\circ}$
- Noise inside hood: $\leq 60\text{dB(A)}$
- Failure alarm: over temperature alarm, deviation alarm, sensor failure alarm, fan motor alarm, power failure alarm, sensor box position alarm, low water alarm, tank position error alarm and system alarm.
- Indication range of humidity: 0%RH~99%RH
- Control range of humidity: 0%RH~90%RH
- Accuracy of humidity: $\pm 10\%\text{RH}$
- Indication range of oxygen concentration: 0%~99%
- Control range of oxygen concentration: 20%~60% (for GT550-103)
- Accuracy of oxygen concentration: $\pm 3\%$

Optional Configurations:

Fixed Neonate bilirubin phototherapy equipment (with blue fluorescence lamps)
 Fixed Neonate bilirubin phototherapy equipment (with LED blue lights)
 Vertical Height Adjustment Stand (VHA Stand)
 Weighing System

Requirements of Environment

Environment temperature: 20 °C~30°C.
 (Set temperature should be higher 3°C than the environment temperature).
 Wind speed of environment: $\leq 0.3\text{m/s}$.

Package

Package: each unit is packed as two cartons
 Size (Main body): 108.5mm x 64mm x 91.5mm
 (Cabinet): 112.5mm x 66.5mm x 73mm
 Gross Weight (Main body): 66Kg (for GT550-104)
 68Kg (for GT550-103)
 (Cabinet): 80Kg



» GT560-500 Infant Radiant Warmer

Brief Introduction:

- Three control modes: Pre-warm mode, manual mode and baby mode controlled by micro-computer.
- Set temperature and baby temperature can be displayed separately.
- Horizon angle of radiator and inclination of the bassinet can be adjusted.
- The glass panels around bassinet can be disassembled.
- APGAR timer.
- Failure alarm indication.
- RS232 connector.

Standard Configuration:

Main body includes Heater head, temperature controller, bassinet, stand, I.V. Pole, tray.

Specification

- Power supply: AC220V-230V, 50Hz.
- Input power: 600VA.
- Mode of control: Pre-warm mode control, manual mode control and baby mode control by micro-computer.
- Control range of baby temperature: 34.5-37.5°C.
- Indicate range of baby temperature: 5°C-65°C.I
- Accuracy of skin temperature sensor: $\leq 0.3^{\circ}\text{C}$.
- Uniformity of temperature: $\leq 2^{\circ}\text{C}$.
- Angle of radiant box: 0°, 30°, 45°for two ways.
- Inclination of the bassinet: the five tile position.
- APGAR timer: it will give sound when the unit is working on 1',5', 10'.
- Failure alarm: over temperature alarm, deviation alarm, sensor failure alarm, power failure alarm, setting alarm, checking alarm and so on.

Requirements of Environment

Environment temperature: 18 °C-30°C.

Wind speed of environment: $\leq 0.3\text{m/s}$.

Package

Package: each unit is packed to one carton

Size: 111cm x 62.5cm x 119.5cm

Gross Weight: 60kg



GT560-200

» GT560-200 Series Infant Radiant Warmer



GT560-200A



GT560-200B

Brief Introduction:

- Three control modes: Pre-warm mode control, manual mode control and baby mode control by micro-computer.
- Set temperature and baby temperature can be displayed separately.
- Horizon angle of radiator and inclination of the bassinet can be adjusted.
- The glass panels around bassinet can be turned outward.
- X-ray cassette under the bassinet.
- APGAR timer.
- Blue timer.
- Failure alarm indication.
- RS232 connector.

Standard Configuration:

GT560-200: the heater head, the bassinet, the main column, the mobile stand, the controller, the I.V. Pole and the tray.

GT560-200B: based on GT560-200, added with the phototherapy radiant box.

GT560-200A: based on GT560-200B, added with the Breath resuscitation bag, Infant head fixing unit. Low-pressure suction unit, the oxygen cylinders, buoy type oxygen regulator, wall type oxygen regulator are the optional parts.

Optional equipments: Vertical Height Adjustment Stand(VHA Stand)

All of above three models can be optional equipment electric lift stand.

Requirements of Environment

Environment temperature: 18 °C~30°C.

Wind speed of environment: ≤0.3m/s.

Specification

- Power supply: AC220V-230V, 50Hz.
- Input power: 700VA (GT560-200 for fixed stand) 750VA (GT560-200A/200B for fixed stand) 1000VA (for VHA stand).
- Mode of control: Pre-warm mode control, manual mode control and baby mode control by micro-computer.
- Control range of baby temperature: 34.5-37.5°C.
- Indicate range of baby temperature: 5°C-65°C.
- Accuracy of skin temperature sensor: ≤0.3°C.
- Variability of temperature: ≤0.5°C.
- Uniformity of temperature: ≤2°C.
- Angle of radiant box: 0°, 30°, 60° for two ways.
- Inclination of the bassinet: ±10°.
- APGAR timer: it will give sound when the unit is working on 1', 5', 10'.
- Failure alarm: over temperature alarm, deviation alarm, sensor failure alarm, power failure alarm, setting alarm, checking alarm and so on.
- Max. bilirubin radiation on mattress: ≥2000uW/cm² (GT560-200B, GT560-200A).
- Bilirubin uniformity of radiating on the mattress effective range: >0.4 (GT560-200A/GT560-200B).
- Wave length of blue light: 420-470nm.

Package

Package: each unit is packed to one carton.

Size (Main body): 127cm x 81cm x 112cm.

Gross Weight: 110kg (GT560-200), 120kg (GT560-200B), 142kg (GT560-200A).



» GT560-400 Infant Radiant Warmer

Brief Introduction:

- 3 kinds of control mode: Pre-warm mode, Manual mode and Baby mode.
- Set temperature and skin temperature can be displayed separately.
- Main body is made of Stainless steel.
- Double sides phototherapy radiant box.
- Acrylic glass bassinet.
- APGAR timer.
- Blue timer.
- Failure alarm indication.
- RS232 connector.

Standard Configuration:

It is mainly composed of the heater head, temperature controller, bassinet, phototherapy and the stand and so on.

Specification

- Power supply: AC220V-230V, 50Hz
- Input power: 850VA
- Mode of control: Pre-warm mode control, manual mode control and baby mode control by micro-computer
- Control range of baby temperature: 34.5-37.5°C
- Indicate range of baby temperature: 5°C-65°C
- Accuracy of skin temperature sensor: $\leq 0.3^{\circ}\text{C}$
- Uniformity of temperature: $\leq 2^{\circ}\text{C}$
- Wave length of blue light: 420~470nm
- Timing range of blue light: 0~9999hrs, 59min
- APGAR timer: it will give sound when the unit is working on 1', 5', 10'.
- Failure alarm: over temperature alarm, deviation alarm, sensor failure alarm, power failure alarm, setting alarm, checking alarm and so on.
- Max. bilirubin radiation on mattress: $\geq 600\text{uW/cm}^2$
- Bilirubin uniformity of radiating on the mattress effective range: >0.4

Requirements of Environment

Environment temperature: 18 °C~30°C.

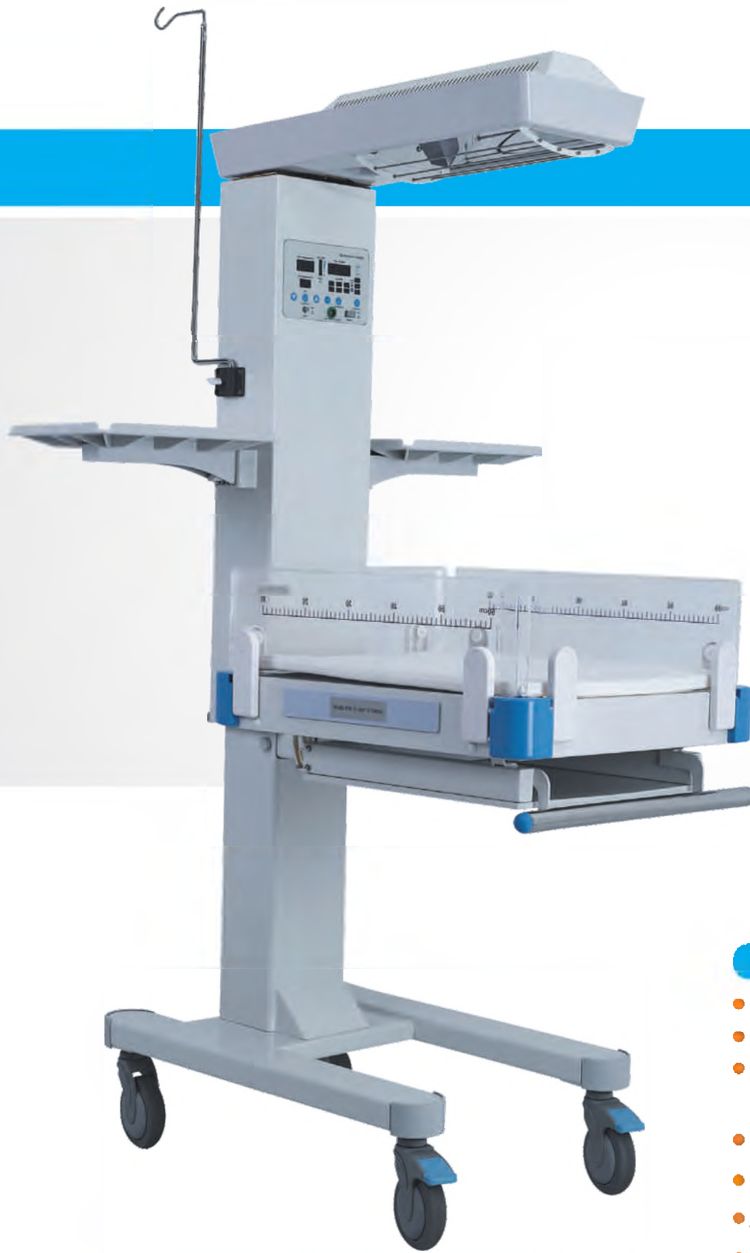
Wind speed of environment: $\leq 0.3\text{m/s}$.

Package

Package: each unit is packed to one carton

Size (Main body): 94cm x 57cm x 108cm

Gross Weight: 57kg



» GT560-300 Infant Radiant Warmer

Brief Introduction:

- **Three control modes:** Pre-warm mode control, manual mode control and baby mode control by micro-computer.
- **Set temperature and baby temperature** can be displayed separately.
- **Horizon angle of radiator and inclination of the bassinet** can be adjusted.
- **The glass panels around bassinet** can be turned outward.
- **X-ray cassette** under the bassinet.
- **APGAR timer.**
- **Failure alarm indication.**
- **RS232 connector.**

Standard Configuration:

Main body includes heater head, bassinet, main column, mobile stand, temperature controller, I.V. Pole and tray.

Specification

- **Power supply:** AC220V-230V, 50Hz.
- **Input power:** 600VA.
- **Mode of control:** Pre-warm mode control, manual mode control and baby mode control by micro-computer.
- **Control range of baby temperature:** 34.5-37.5°C.
- **Indicate range of baby temperature:** 5°C-65°C.
- **Accuracy of skin temperature sensor:** $\leq 0.3^{\circ}\text{C}$.
- **Uniformity of temperature:** $\leq 2^{\circ}\text{C}$.
- **Angle of radiant box:** 0°, 30°, 60° for two ways.
- **Inclination of the bassinet:** the three tilt position.
- **APGAR timer:** it will give sound when the unit is working on 1', 5', 10'.
- **Failure alarm:** over temperature alarm, deviation alarm, sensor failure alarm, power failure alarm, setting alarm, checking alarm and so on.

Requirements of Environment

Environment temperature: 18 °C~30°C.

Wind speed of environment: $\leq 0.3\text{m/s}$.

Package

Package: each unit is packed to one carton

Size (Main body): 122cm x 67cm x 110cm

Gross Weight: 100kg



GT570-500

GT570-500

- 1、Blue fluorescent lamp as the phototherapy radiating elements.
- 2、Angle of lamp module can be adjusted.
- 3、Height of lamp module can be adjusted.
- 4、Timer.
- 5、Wheels can be locked.
- 6、Stainless support pole.

GT570-105

- 1、LED fluorescent lamp as the phototherapy radiating elements.
- 2、Angle of lamp module can be adjusted.
- 3、Height of lamp module can be adjusted.
- 4、Timer.
- 5、Wheels can be locked.
- 6、Stainless support pole.



GT570-105

» GT570-500/GT570-105 Neonate Bilirubin Phototherapy Equipment

Patient Monitoring



>> GT606-501A Multi-parameter Patient Monitor

Specification

- 10.4 inch brightness colorful TFT LCD.
- Simultaneous display of 5/7 lead ECG by one screen.
- Analysis of real time ST segment and arrhythmia.
- 168 hour graphic and tabular trend with data storage.
- Display mode of large character for remote observation.
- Up to 66 beds for networking capacity to connect with HIS.
- 750 group NIBP data for recall and display.
- Digital SPO2 technology supporting function of anti-motion and anti-low perfusion.
- Standard: ECG, NIBP, SPO2, RESP, TEMP, PR, Drug dose calculation, OXYCRG, battery.
- Optional: 12 lead ECG, 2-TEMP, 2-IBP, Recorder, EtCO2 (side stream, main stream), CO.



>> GT606-501B Multi-parameter Patient Monitor

Specification

- 12.1 inch brightness colorful TFT LCD.
- Simultaneous display of 5/7 lead ECG by one screen.
- Analysis of real time ST segment and arrhythmia.
- 168 hour graphic and tabular trend with data storage.
- Display mode of large character for remote observation.
- Up to 66 beds for networking capacity to connect with HIS.
- 750 group NIBP data for recall and display.
- Digital SPO2 technology supporting function of anti-motion and anti-low perfusion.
- Standard: ECG, NIBP, SPO2, RESP, TEMP, PR, Drug dose calculation, OXYCRG, battery.
- Optional: 12 lead ECG, 2-TEMP, 2-IBP, Recorder, EtCO2 (side stream, main stream), CO.



>> GT606-504 Multi-parameter Patient Monitor

Specification

- 7 inch brightness (800x600) colorful TFT LCD.
- Simultaneous display of 5/7 lead ECG by one screen.
- Analysis of real time ST segment and arrhythmia.
- 48 hour graphic and tabular trend with data storage.
- Display mode of large character for remote observation.
- Up to 66 beds for networking capacity to connect with HIS.
- 600 group NIBP data for recall and display.
- Digital SPO2 technology supporting function of anti-motion and anti-low perfusion.
- Standard: ECG, NIBP, SPO2, RESP, TEMP, PR, Drug dose calculation, OXYCRG, battery.
- Optional: 2-TEMP, Recorder, Central Monitoring System—CMS.



>> GT606-505 Central Monitoring System

Specification

- Connected to 66 bedside units at the same time
- Up to 64 waveforms for 32 bedside monitors (dual screen display)
- 17 types of arrhythmia analysis
- Collect & display multi physiological parameters and waveforms measured by bedside units
- All physiological parameters waveforms (13 channels at most) presentation for one patient
- Bulk storage capacity (96 hour holographic ECG, 240 hour trend graph, 30000 historical data)
- Strong printing functions (any printer at any time, copy screen print, data review print)



>> GT606-506 Laptop Multi-parameter Patient Monitor

Specification

- Palm size and compact structure for easy carrying and operation.
- Clear and bright color LCD with real time display.
- Friendly user interface with touch screen.
- Intelligent Measuring of ECG/NIBP/SpO2/PR/PLETH/TEMP.
- Storage/Review trend data up to 129 hours and 3888 groups.
- Software for uploading/review/printing/storage of history data and long time monitoring on PC, telemetry communication.
- Audio and visual alarm.
- Built-in rechargeable Li-ion battery for up to 5 hour operation.
- Automatic shutdown for power saving.



>> GT606-507 Vital Sign Monitor

Specification

- Standard configuration: NIBP, SPO2, TEMP, Pulse Rate.
- Dual indicator: LCD to display SPO2, TEMP, PLETH and battery capacity, LED to display NIBP and PR.
- Audible and visual alarm with limit to be freely set.
- Triple power: AC, built in rechargeable Ni/MH battery, AA alkaline/rechargeable battery supporting at least 10 hour continuous operation.
- Automatic power off, in case of long time powering on without operation, to protect the built in battery from excessive discharging.
- Supports transmission of patient trend to PC for display, archiving and printing.



>> GT606-508 Laptop Pulse Oximeter

Specification

- Standard configuration: SPO2, TEMP, Pulse Rate.
- Compact and light structure for easy carrying and handling.
- Large LCD to display PLETH and measurement for SPO2, TEMP and PR.
- Able to permanently store 36 hour graphic and tabular trend for recall.
- Capacity of transmitting patient's trend data to PC for further display and management.
- Built in rechargeable Ni/MH battery.
- Indicator to display low battery capacity.
- Automatic power off.



>> GT606-509 Laptop Pulse Oximeter

Specification

- Compact and light structure for easy carrying and handling
- Large LCD to display PLETH and measurement for SPO2, TEMP and PR
- Able to permanently store 36 hour graphic and tabular trend for recall
- Capacity of transmitting patient's trend data to PC for further display and management
- AA alkaline or rechargeable battery supporting 7 hour continuous operation
- Indicator to display low battery capacity
- Automatic power off
- Automatic power off



>> GT147-500A Fingertip Pulse Oximeter

Specification

- Mini and light design with "all in one" integrated for easy carrying
- LED screen to display measurements of SPO2, PR and pulse strength
- Immediate and real time spot check
- Single button interface for easy operation
- AAA alkaline or rechargeable battery supporting 3 hour continuous operation
- Indicator to display low battery capacity
- Automatic power off



>> GT147-500B Fingertip Pulse Oximeter

Specification

- Mini and light design with "all in one" integrated for easy carrying
- 64k Color OLED Display, with adjustable four direction
- Immediate and real time spot check
- Single button interface for easy operation
- AAA alkaline or rechargeable battery supporting 3 hour continuous operation
- Indicator to display low battery capacity
- Automatic power off

>> GT607-300 Laptop Fetal Doppler

Specification

- Pocket design, easy and convenient to use
- High quality loudspeaker, clear timbre, volume can be adjusted
 - Sound alarm function when FHR is not in normal range
 - Two FHR modes: real-time and average
- Big LCD for dynamic display of FHR and battery energy
- Matching different battery: AA battery, 9V battery or rechargeable battery
 - Continuous working time > 8 hours
- Built-in loudspeaker: audio output can connect recorder and earphone
 - Customized color option of blue and pink



ECG

>> GT606-510 12 Channel Holter System

Specification

- Standard 12 channel, 24 hour Holter system.
- 10 leadwire ECG cable to guarantee high quality ECG data.
- High resolution LCD to display ECG trace and operation status of the recorder.
- Built in SD card with bulk capacity and ability to avoid damage due to frequent plug in and plug out.
- Patient event button to help doctor know exactly some special ECG data.
- AHA and MIT database validated software to assure 99.8% template accuracy.
- Multi-window display to ease operation and refrain the operator/doctor from excessive works in the process of data management.
- Standard diagnostic tools for effective analysis Arrhythmia, ST-T change, QTd, Af/AF,
- HRV, OASIS, with optional HRT, Pace maker detection and VLP.
- Customized language setting to help customer-sided lingual transformation.
- Extra recorder as optional configuration.



>> GT147-1201 12 Channel Interpretive ECG

Specification

- 6/(6+1)/12 channel printout format
- 6 inch flexible 320x240 LCD to display 12 channel ECG waveform, setting menu and operating conditions of the unit
- Rhythm lead with histogram and trend graph for R-R interval
- Automatic measurement and interpretation of standard ECG parameter
- Memory of at least 300 exams for recall and duplication
- Built in RS232/USB interface supporting data transmission to PC
- Dual power operation, AC and Li-ion battery supporting 2 hour operation
- Paper size: 210mmx20m, roll type/ 210mmx140mmx20m, Z fold



>> GT147-106 6 Channel Interpretive ECG

Specification

- 3/(3+1)/(6+3)/6 channel printout format
- 5 inch graphic 320x240 LCD to display 3/(3+2)/6/12 channel ECG waveform, setting menu and operating conditions of the unit
- Rhythm lead with histogram and trend graph for R-R interval
- Automatic measurement and interpretation of standard ECG parameter
- Memory of at least 128 exams for recall and duplication
- Built in RS232/USB interface supporting data transmission to PC
- Dual power operation, AC and Li-ion battery supporting 2 hour operation
- Paper size: 112mmx20m, roll type



» GT147-103A 3 Channel Interpretive ECG

Specification

- 1/2/3/(3+2) channel printout format.
- 20x4 character LCD to display setting menu and operating conditions of the unit. Rhythm lead with histogram and trend graph for R-R interval.
- Automatic measurement and interpretation of standard ECG parameter.
- Memory of at least 128 exams for recall and duplication.
- Built in RS232/USB interface supporting data transmission to PC.
- Dual power operation, AC and Li-ion battery supporting 2 hour operation.
- Paper size: 63mmx20m, roll type.



» GT147-103B 3 Channel Interpretive ECG

Specification

- 1/2/3/(3+2) channel printout format.
- 3.8 inch graphic 320x240 LCD to display 3/6/12 channel ECG waveform, setting menu and operating conditions of the unit.
- Rhythm lead with histogram and trend graph for R-R interval.
- Automatic measurement and interpretation of standard ECG parameter.
- Memory of at least 128 exams for recall and duplication.
- Built in RS232/USB interface supporting data transmission to PC.
- Dual power operation, AC and Li-ion battery supporting 2 hour operation.
- Paper size: 63mmx20m, roll type.



» GT147-101A 1 Channel Interpretive ECG

Specification

- 1 / 2 channel printout format.
- 192x64 graphic LCD to display 1 channel ECG waveform, setting menu and operating conditions of the unit.
- Rhythm lead with histogram and trend graph for R-R interval.
- Automatic measurement and interpretation of standard ECG parameter.
- Memory of at least 85 exams for recall and duplication.
- Built in RS232/USB interface supporting data transmission to PC.
- Dual power operation, AC and Li-ion battery supporting 2 hour operation.
- Paper size: 50mmx20m, roll type.



» GT147-101B 1 Channel Interpretive ECG

Specification

- 1 / 2 channel printout format.
- 20x2 character LCD to display 1 channel ECG waveform, setting menu and operating conditions of the unit.
- Rhythm lead with histogram and trend graph for R-R interval.
- Automatic measurement and interpretation of standard ECG parameter.
- Memory of at least 85 exams for recall and duplication.
- Built in RS232/USB interface supporting data transmission to PC.
- Dual power operation, AC and Li-ion battery supporting 2 hour operation.
- Paper size: 50mmx20m, roll type.

Oxygen Generator

- » GT620-305 (without Nebulizer)
- » GT620-307 (without Nebulizer)
- » GT620-305N (with Nebulizer)
- » GT620-307N (with Nebulizer)

With oxygen concentration display, low oxygen concentration alarm

Oxygen Concentrator
Oxygen flux: 1~3L/min / 1~5L/min
Oxygen density: $\geq 90\%$
Output pressure: 0.04~0.06MPa
Power: $\leq 400\text{VA}$ / $\leq 600\text{VA}$
Power supply: $220 \pm 10\% \text{V}$ 50HZ
Noise: $\leq 55\text{dB}$



Nebulizer Spare Part



Fetal Doppler



>> GT607-500 Pocket Fetal Doppler

Introduction:

Sonoline B Pocket Fetal Doppler is a hand-held obstetrical unit, which can be used in hospital, clinic and home for daily self-check by pregnant woman. It contains components of ultrasonic signal transmitter and receiver, analog signals processing unit, FHR calculating unit, LCD display control unit etc. Sonoline B Pocket Fetal Doppler is a high performance model with (fetal heart rate) LCD digital display. It has 3 work modes: real-time FHR display mode, averaged FHR display mode, and manual mode. It has audio output and can be connected with earphone or recorder with audio input.

Main Features

- Built-in speaker
- Three work modes: Real-time FHR display mode, averaged FHR display mode and manual mode
- LCD display
- Probe inspection
- Battery status indicator
- Backlight
- Auto Shut-OFF: After 1 minute no signal, power off automatically
- Suitable Using Range: Suitable for use after the 12th week of pregnancy
- Two pieces of standard 1.5V alkaline battery available which can work no less than 10 hours
- Output for headphones
- The probe can be changeable

>> GT607-600 Pocket Fetal Doppler

Introduction:

Pocket Fetal Doppler is a hand-held obstetrical unit, which can be used in hospital, clinic and home for daily self-check by pregnant woman. The device uses color LCD of high resolution to display the fetal heartbeat waveform, and figure out the FHR to help the doctor diagnose in time. It contains components of ultrasonic signal transmitter and receiver, analog signals processing unit, FHR calculating unit, LCD display control unit etc. It has 3 work modes: real-time FHR display mode, averaged FHR display mode, and manual mode. It also has audio output, and can be connected with earphone or recorder with audio input.

Main Features

- Beautiful shape, portable, easy operation.
- The probe has bending structure which is easy to operate and can increase the ease of the pregnant women, embodies the humane care design.
- Fetal heart rate values, bar graph and heartbeat waveform color screen display.
- Alarming in red when the fetal heart rate range is out of the normal range
- Battery status indicator.
- The probe can be changeable.
- Probe inspection.
- Built-in speaker.
- Output for headphone.
- Auto shut off.
- Two pieces of standard 1.5V alkaline battery available which can work no less than 8 hours.



>> GT607-700 Baby Sound A Pocket Fetal Doppler

Introduction:

Baby Sound A Pocket Fetal Doppler is a hand held equipment for detecting Fetal Heart Rate (FHR) which is specially designed for family of pregnant women to conduct daily detection of FHR by themselves. Pregnant women can operate by themselves to hear fetal heart sound and calculate FHR to realize the purpose of pre-monitoring and fetus caring.

Main Features

- The probe and main units integrated together.
- Delicate and compact design, portable to use.
- Particular 2 Headphone Sockets design can let expectant mother and father hear the fetal heart sound together.
- High sensitive doppler probe.
- Low ultrasound output intensity, much lower than the relative government standard and with high safe quality.
- Low power consumption, two AAA size batteries can last more than 8 hours for continuous use (depend on battery type and volume).
- Can be connected to a computer or recorder to record the fetal heart sound with recording cable.
- Output for headphones.
- The probe can be changeable.



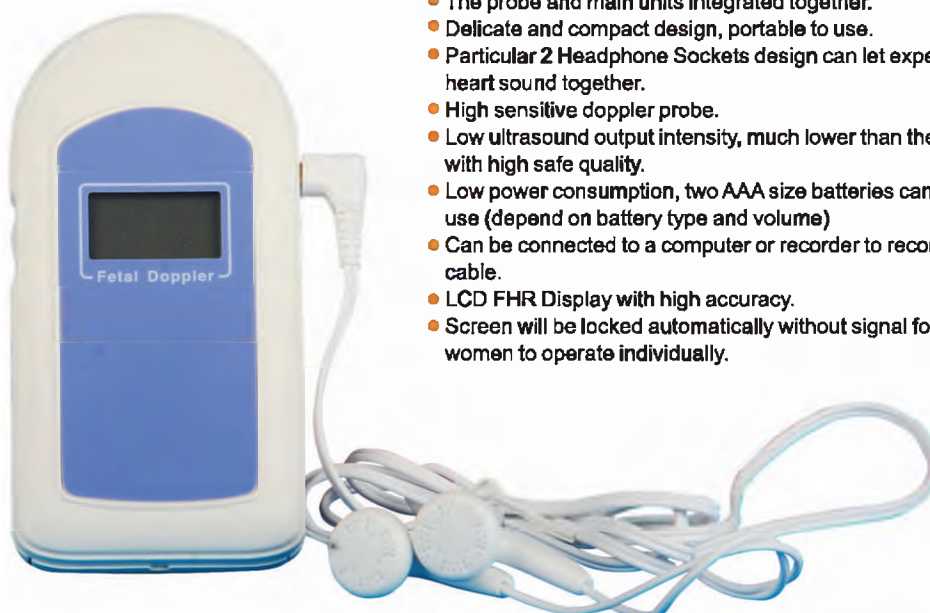
>> GT607-800 Baby Sound B Pocket Fetal Doppler

Introduction:

Baby Sound B Pocket Fetal Doppler is a hand held equipment for detecting Feta Heart Rate (FHR) which is specially designed for family of pregnant women to conduct daily detection of FHR by themselves. Pregnant women can operate by themselves to hear fetal heart sound and calculate FHR to realize the purpose of pre-monitoring and fetus caring. Baby Sound B is a high performance model with LCD digital display.

Main Features

- The probe and main units integrated together.
- Delicate and compact design, portable to use.
- Particular 2 Headphone Sockets design can let expectant mother and father hear the fetal heart sound together.
- High sensitive doppler probe.
- Low ultrasound output intensity, much lower than the relative government standard and with high safe quality.
- Low power consumption, two AAA size batteries can last more than 8 hours for continuous use (depend on battery type and volume)
- Can be connected to a computer or recorder to record the fetal heart sound with recording cable.
- LCD FHR Display with high accuracy.
- Screen will be locked automatically without signal for 15s, which is convenient for pregnant women to operate individually.



Ultraviolet Sterilizing Lamp Car



» GT608-101I / 101IA

Double-tube Carbon Steel Ultraviolet Lamp Cart

Product Details:

It is made from carbon steel in the design of dual tube; technical parameters as follows:

1. Tube powder $\geq 30W \times 2$
2. Number of tubes: 2pcs
3. Applicable static volume $\geq 50m^3$
4. Power voltage: $220V \pm 10\%$, frequency: $50Hz \pm 10\%$
5. Input power: 180VA
6. Ultraviolet wave length: 253.7nm
7. Radiation strength: $\geq 214uw/cm^2$
8. It is movable and foldable, allowable to hide tubes and adjust angle at 30° , 60° , 90° , 135° or 180° .
9. It is provided with a timer from 0 to 120 minutes, with long-open function, and will ring bells after reaching the time.

» GT608-102

Infrared Sensing Ultraviolet Sterilization Lamp Trolley

Product Details:

Technical Parameters:

1. Tube powder $\geq 30W \times 2$, number of tubes: 2pcs, free from ozone quartz material
2. Sterilization lifespan of tube: $\geq 6000h$, with intellisense
3. After turning on the sterilizing lamp, it can not be lit once there is someone entering the room
4. It will give an alarm or put out immediately if there is someone or animal bursting into the room during sterilization
5. It is movable and foldable, and equipped with a timer, can be timed 0~1440 minutes.
6. Time delay switch: It will shine normally after people leave
7. 254nm radiation strength (1m) $\geq 120uw/m^2$



» GT608-103IC / 103IB

Four-pipe Carbon Steel
UV-lamp Trolley

GT608-103IC



GT608-103IB

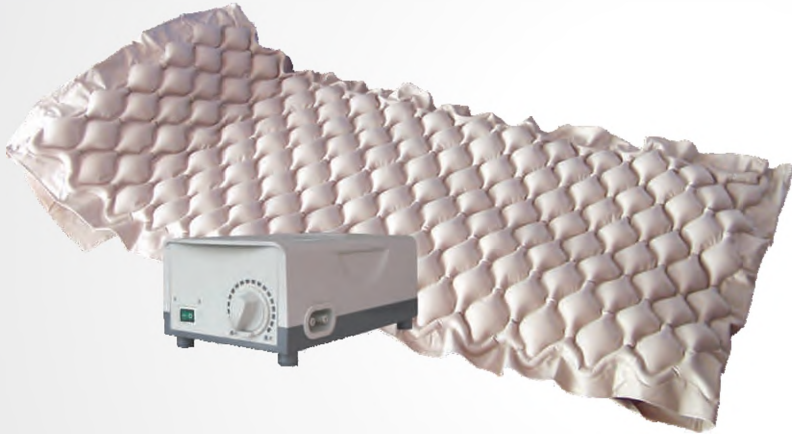


Product Details:

It is made from carbon steel in the design of four-tube;
technical parameters as follows:

1. Tube powder $\geq 30W \times 4$
2. Number of tubes: 4pcs
3. Applicable static volume $\geq 100m^3$
4. Power voltage: $220V \pm 10\%$, frequency: $50Hz \pm 10\%$
5. Input power: 180VA
6. Ultraviolet wave length: 253.7nm
7. Radiation strength: $\geq 428uw/cm^2$
8. It is movable and foldable, allowable to hide tubes and adjust angle at 30° , 60° , 90° , 135° or 180°
9. It is provided with a timer from 0 to 60 minutes, and will ring bells after reaching the time.

Bedsores Prevention Cure Mattress



» GT143-102

Bedsores Prevention Cure Mattress

Material: PVC material (EN-71, non-toxic)
Thickness: 0.35mm
Size: 7.8"x34" (inflated)
Air output: 4~6L/min
Cycle time: 5minutes
Supply voltage: 220V/110V
Pressure range: 110-140mmHg
Ball height (inflated): 21/2"
Number of cells (inflated): 130
Power Line Length: 1.8m

» GT143-101

Bedsores Prevention Cure Mattress

Thickness: 0.35mm
Size: 316cmx94cm (inflated)
Height of interchangeable tube: 11cm
Number of interchangeable: 18
Air output: 4-6L/min
Cycle time: 10 minutes
Power: 220V/110V
Pressure range: 70 – 210mmHg
Power cord length: 1.8m



» GT143-105

Bedsores Prevention Cure Mattress

Thickness: 0.35mm
Size: (inflated) 199cmx100cm
Air output: 4~6L/min
Cycle time: 6minutes
Power: AC220V±10% 50Hz
Pressure range: > 13000 Pa
Power Line Length: 1.8m
Noise: < 40dB
Number of interchangeable: 22



Oxygen Bag / Oxygen Cylinder



» GT630-200

Oxygen Bag

Major specifications: 30L/42L/50L

It is made of non-poisonous nylon with rubber materials applied on single face which has no adverse chemical effects. It is mainly used for emergency use in hospital and as healthcare product at home. It characterized with easy to clean, safety, durable and easy to carry.



GT630-300 A (Steel)

» GT630-300

Oxygen Cylinder (steel)

(major specification: 2L, 3.2L, 4L)

Adopting unique design of combination of pressure-reducing valve and safety valve. Compact in structure, fancy and safe, equipped with flow regulator, stable output pressure.

Adopting empty-inside packing (we have acquired the patent for this packing) unique double-way design (needn't open the lower valve when breathing oxygen, relieves user's fear for the pressure containers)

Strong, tough, collision, protection. It is easy to carry and move for its mini-size and lightweight.



GT630-300 B 10L 8L 6.3L
Oxygen Cylinder 6L/8L/10L (with a trolley)



The Basic

Infusion Stand



» **GT140-518**
Infusion Stand



» **GT140-102**
Infusion Stand
H:116cm-206cm



» **GT140-519**
Infusion Stand
H:133cm-223cm

» **GT140-515**
Infusion Stand
H:136cm-230cm



» **GT140-513**
Infusion Stand
H:74cm-90cm



» **GT140-516**
Infusion Stand
H:120cm-200cm



Trolley / History Trolley



>> GT505-300

Trolley

5 drawers: 2 small (70mm in height), 2 medium (140mm in height), and 1 large (210mm in height).

Standard accessories: 2 garbage bins, 1 transparent file box, 1 sliding side board, 1 metal salver, and 1 I.V. pole.

>> GT505-400

Trolley

- Material: aluminum alloy, ABS plastic and stainless steel.
- Overall size: 850x520x1010mm.
- 6 layers of drawers, can be pulled out from both sides, self-lock when closed; total 50 medicine boxes on all drawers, on front of each medicine box, case-history cards stuck.
- Accessories: 2 pcs of garbage bins, 1 pc of transparent file box, 1pc of sliding side board, and 1 set of five-hooks hanging device.



>> GT505-100

History Trolley

42 pcs of case-history folders and 1 big drawer, all can be locked to keep the patient's history data inside safe.

4 pcs of 125mm castors, two with brake and two without
Weight: 65KGS.

Movable Table



>> GT504-101

Movable Table

Wooden Table

Adjustable Height: 640mm-935mm



>> GT504-102

Movable Table

Plastic Table

Aluminum-Alloy Column

Adjustable Table: 640mm-935mm



>> GT504-103

Movable Table

PP Plastic

Aluminum-Alloy column

Adjustable Height: 660mm-955mm

Transfusion Chair / Waiting Chair



>> GT503-100

Transfusion Chair

Specification: 77x68x108cm

Packing size: 92x62x35cm

Net Weight: 21.5kg

Description: the fabric is pressed PVC, artificial leather, 3 angles adjustable.



>> GT503-200

Stainless Steel Transfusion Chair

Specification: 77x68x108cm

Packing size: 92x62x35cm

Net Weight: 22kg

Description: the fabric is pressed PVC, artificial leather, with table, 3 angles adjustable.

>> GT503-300

Children Transfusion Chair

Specification: 77x68x108cm

Packing size: 92x62x35cm

Net Weight: 19kg

Description: the fabric is pressed PVC, artificial leather, with table, not adjustable.



>> GT503-400

Stainless Steel Transfusion Chair

Specification: 77x68x108cm

Packing size: 92x62x35cm

Net Weight: 20kg

Description: the fabric is pressed PVC, artificial leather, 2 angles adjustable



» GT503-510

New Transfusion Chair

Specification: 82x70x102cm

Net Weight: 25kg

Description: the fabric is pressed PVC, artificial leather, not adjustable.

» GT503-520

Luxury Transfusion Chair

Specification: 90x75x110cm.

Packing size: 100x60x44cm.

Net Weight: 31kg.

Description: the fabric is pressed PVC, artificial leather, 3 angles adjustable, with rotatable table.



» GT503-800

Waiting Chair

Width: 54cm for single chair.

Net Weight: 33kg.

Description: plastic coated surface, galvanized armrest.



» GT503-810

Stainless Steel Waiting Chair

Width: 54cm for single chair.

Net Weight: 26kg.

Description: arm, foot, seat, and back all stainless steel, steel tube beam with powder coating.

Inspect Bed



>> GT506-001
Stainless Steel Inspecting Bed I Type
Specification:1900x600x620mm



>> GT506-002
Stainless Steel Inspecting Bed II Type
Specification:1900x600x620mm



>> GT506-003
Stainless Steel Inspecting Bed III Type
Specification:1900x600x620mm



>> GT506-004
Gynecology Inspecting Bed
Specification:1800x570x800mm



>> GT506-005
Gynecology Inspecting Bed
Specification:1800x570x800mm



>> GT506-006
Gynecology Inspecting Bed
Specification:1800x570x800mm



>> GT506-007
Gynecology Inspecting Bed
Specification:1400x570x700mm



>> GT504-900

Nurse Chair

Specification:φ300x500/660mm



Nurse Chair

>> GT504-901

Nurse Chair

Specification:φ300x500/660mm



>> GT504-902

Nurse Chair

Specification:φ300x500/660mm



>> GT504-903

Nurse Chair

Specification:φ300x500/660mm



>> GT504-904

Nurse Chair

Specification:φ300x500/660mm



>> GT504-905

Nurse Chair

Specification:φ360x550/710mm



>> GT504-906

Nurse Chair

Specification:φ360x550/710mm



>> GT504-907

Nurse Chair

Specification:φ380x430/530mm

Others



Adult Heart Model Human Skeleton Model



>> GT512-101

Adult Heart Model

Size: Life size, 2parts
Material: PVC



>> GT512-102

Human Skeleton Model

Features:

The model shows all the anatomic details of skeleton structure.

Joint and upper, lower extremities is removable.

Size: 180cm

Material: Advanced PVC

PACKAGE SIZE: 97x45.5x28cm

G.W.: 14KGS



>> GT512-103

Human Skeleton Model

Features:

Metal hanger, normal erect posture, limbs can be removable, display bony framework and physical relations.

Size: 85cm

Material: Imported PVC

PACKAGE SIZE: 19x19x26cm

G.W.: 1.3KGS

CPR Training Manikin

» GT512-104 CPR Training Manikin

Features:

1. Simulate standard open airway and sound prompting
2. External breast compression: indicator light display ,digital counter display and sound prompting
 - a.Indicator light display of correct and wrong compression position; digital counter display; sound prompting of wrong compression.
 - b.Display of correct (at least 5cm) and wrong (less than 5cm) compression intensity; digital strip indicator light (yellow, green ,red) shows compression depth; counter display; sound prompting of wrong operation.
3. Artiificial respiration (Inhalation) indicator light display, digital counter display and sound prompting:
 - a. Inhalation is $\leq 500\text{ml}/600\text{ml}-1000\text{ml}\leq$; strip indicator light shows inhalation volume; counter display of correct and wrong operations, and sound prompting of wrong operation.
 - b.Inhalation too quickly or too much result in air entering into stomach, counter display of sound prompting of wrong operation.
4. Ratio of compression and artificial respiration: 30:2(one or two person)
5. Operating cycle: one cycle includes five times of 30:2 ratio of compression and artificial respiration.
6. Operating frequency: at least 100 times per minute
7. Operation methods: exercise operation; examine operation
8. Operation time: counting down device
9. Print: print operation result

10. Examination of pupil response: mydriasis and myosis
11. Examination of carotid response: simulate spontaneous carotid pulse in compression process
12. Working conditions: Input power is 110-240V

Main Components

1. Full body manikin (1)
2. Monitor (1)
3. Portable plastic box (1)
4. CPR operation pad (1)
5. CPR face shield sheet (50pcs/box)
6. Exchangeable lung bag (5)
7. Exchangeable face skin (1)
8. Temperature sensing print paper (2 roll)
9. Guide manual (1)

Package

SIZE: 97x33x58cm
G.W.: 22KGS

Optional Function:

1. Endotracheal intubation
2. Gastrolavage
3. Trauma limbs

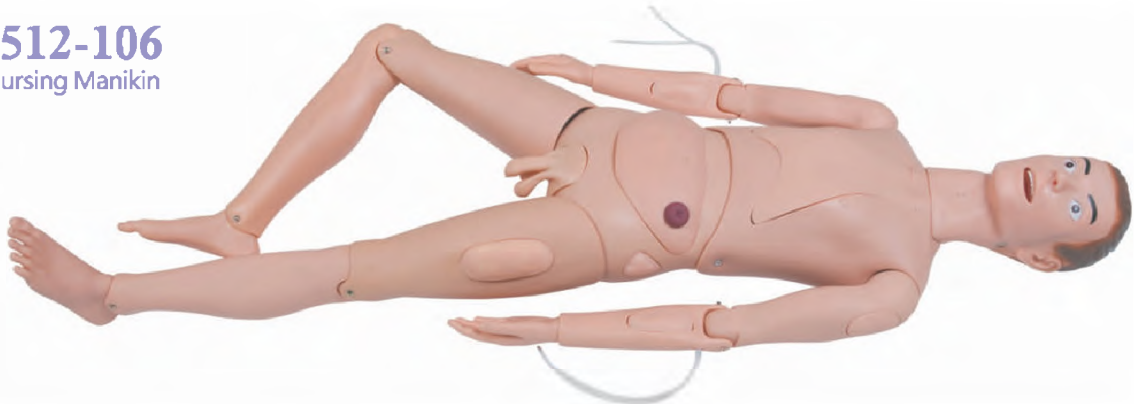


Brain with Arteries Model Basic Nursing Manikin / Skull Model



» **GT512-105**
Brain with Arteries Model
Size: Life size, 9parts
Material: PVC

» **GT512-106** Basic Nursing Manikin



Features:

1. Hair and face washing
2. Eye and ear washing and administering
3. Mouth cavity and artificial teeth care
4. Endotracheal intubation
5. Sputum suction
6. Oxygen inhaling
7. Oral and nasal feeding
8. Gastro lavage
9. Main organs in the thoracic cavity
10. Venipuncture, injection, blood transfusion(Arm)
11. Deltoid subcutaneous injection
12. Vastus lateralis injection
13. Thoracic cavity ,abdominal cavity, liver, bone marrow and lumbar puncture
14. Enema
15. Female urethral catheterization
16. Male urethral catheterization
17. Female bladder irrigation
18. Male bladder irrigation
19. Ostomy

20. Buttocks intramuscular injection
21. Main organs in the abdominal wall
22. Holistic nursing: sponge bath, replacing clothes
23. Tracheotomy care

Package

SIZE: 127x48x22cm G.W.: 16.2KGS

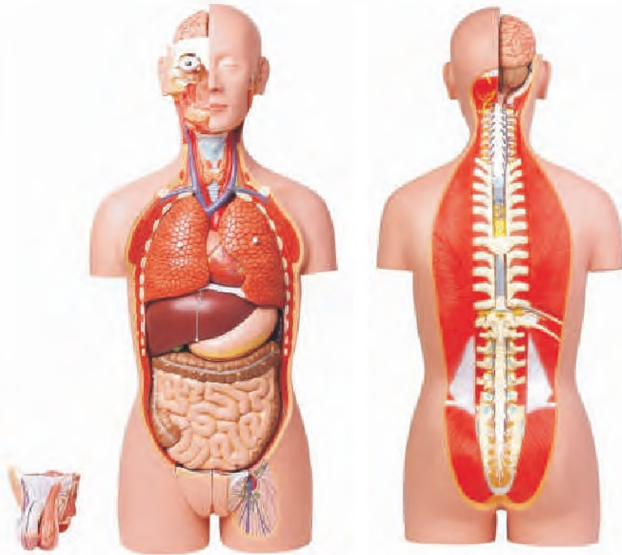


» **GT512-107** Skull Model

Features:

Mounted on a base
Material: Advanced PVC
PACKAGE SIZE: 22x16x23.5cm
G.W.: 1KGS
Size: 85cm
Material: Imported PVC
PACKAGE SIZE: 19x19x26cm
G.W.: 1.3KGS

Dual-Sex Torso-27 parts Basic Nursing Manikin



>> GT512-108

Dual-Sex Torso-27 parts

Size: 85cm
Material: PVC

>> GT512-109

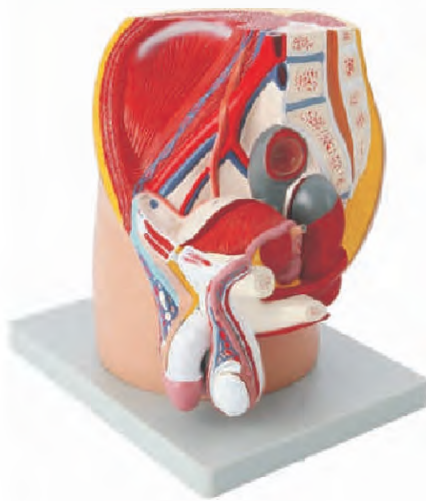
Basic Nursing Manikin

Features:

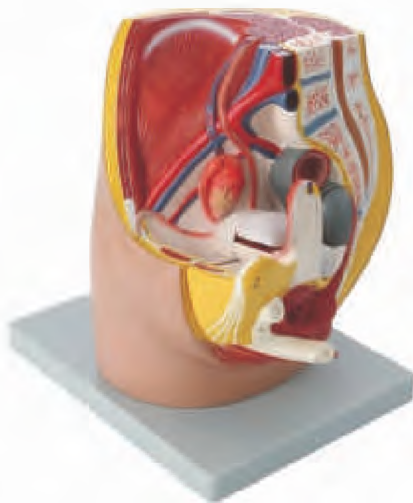
1. Oxygen inhalation
2. Nasal feeding
3. Gastrolavage
4. Duodenal drainage
5. Esophageal and gastric balloon tamponade surgery
6. Deltoid subcutaneous injection
7. Subcutaneous puncture
8. Venipuncture, injection, blood transfusion (Arm)
9. Male/female urethral catheterization
10. Male/female urethral catheterization
11. Gauze drainage can be practiced in the fistula of wound.



Median Section of Male Pelvis Model
Median Section of Female Pelvis Model
Eyes Model-6parts



>> GT512-110
Median Section of Male Pelvis Model
Size: Life size, 4parts
Material: PVC



>> GT512-111
Median Section of Female Pelvis Model
Size: Life size, 4parts
Material: PVC

>> GT512-112
Eyes Model-6parts
Size: 3times magnified, 6parts
Material: PVC





Архангельск (8182)63-90-72
Астана (7172)727-132
Астрахань (8512)99-46-04
Барнаул (3852)73-04-60
Белгород (4722)40-23-64
Брянск (4832)59-03-52
Владивосток (423)249-28-31
Волгоград (844)278-03-48
Вологда (8172)26-41-59
Воронеж (473)204-51-73
Екатеринбург (343)384-55-89
Иваново (4932)77-34-06

Ижевск (3412)26-03-58
Иркутск (395)279-98-46
Казань (843)206-01-48
Калининград (4012)72-03-81
Калуга (4842)92-23-67
Кемерово (3842)65-04-62
Киров (8332)68-02-04
Краснодар (861)203-40-90
Красноярск (391)204-63-61
Курск (4712)77-13-04
Липецк (4742)52-20-81

Магнитогорск (3519)55-03-13
Москва (495)268-04-70
Мурманск (8152)59-64-93
Набережные Челны (8552)20-53-41
Нижний Новгород (831)429-08-12
Новокузнецк (3843)20-46-81
Новосибирск (383)227-86-73
Омск (3812)21-46-40
Орел (4862)44-53-42
Оренбург (3532)37-68-04
Пенза (8412)22-31-16

Пермь (342)205-81-47
Ростов-на-Дону (863)308-18-15
Рязань (4912)46-61-64
Самара (846)206-03-16
Санкт-Петербург (812)309-46-40
Саратов (845)249-38-78
Севастополь (8692)22-31-93
Симферополь (3652)67-13-56
Смоленск (4812)29-41-54
Сочи (862)225-72-31
Ставрополь (8652)20-65-13

Сургут (3462)77-98-35
Тверь (4822)63-31-35
Томск (3822)98-41-53
Тула (4872)74-02-29
Тюмень (3452)66-21-18
Ульяновск (8422)24-23-59
Уфа (347)229-48-12
Хабаровск (4212)92-98-04
Челябинск (351)202-03-61
Череповец (8202)49-02-64
Ярославль (4852)69-52-93

Киргизия (996)312-96-26-47

Россия (495)268-04-70

Казахстан (772)734-952-31

<https://greetmed.nt-rt.ru> || gdc@nt-rt.ru